

# SHADE COLLECTION

COLLECTIONS



**STARPOOL**

wellness concept

Welcome to  
a new dimension  
of Wellness



# Summary

<b>Shade Collection</b>	9
-------------------------	---

## SHADE SAUNA

<b>Introduction</b>	13
Characteristics	14
Functional Design	16
Outfitting	18
Technical data	20
Layout	21

## SHADE STEAM ROOM

<b>Introduction</b>	29
Characteristics	30
Functional Design	32
Outfitting	34
Technical data	36
Layout	37

## SHADE SHOWER

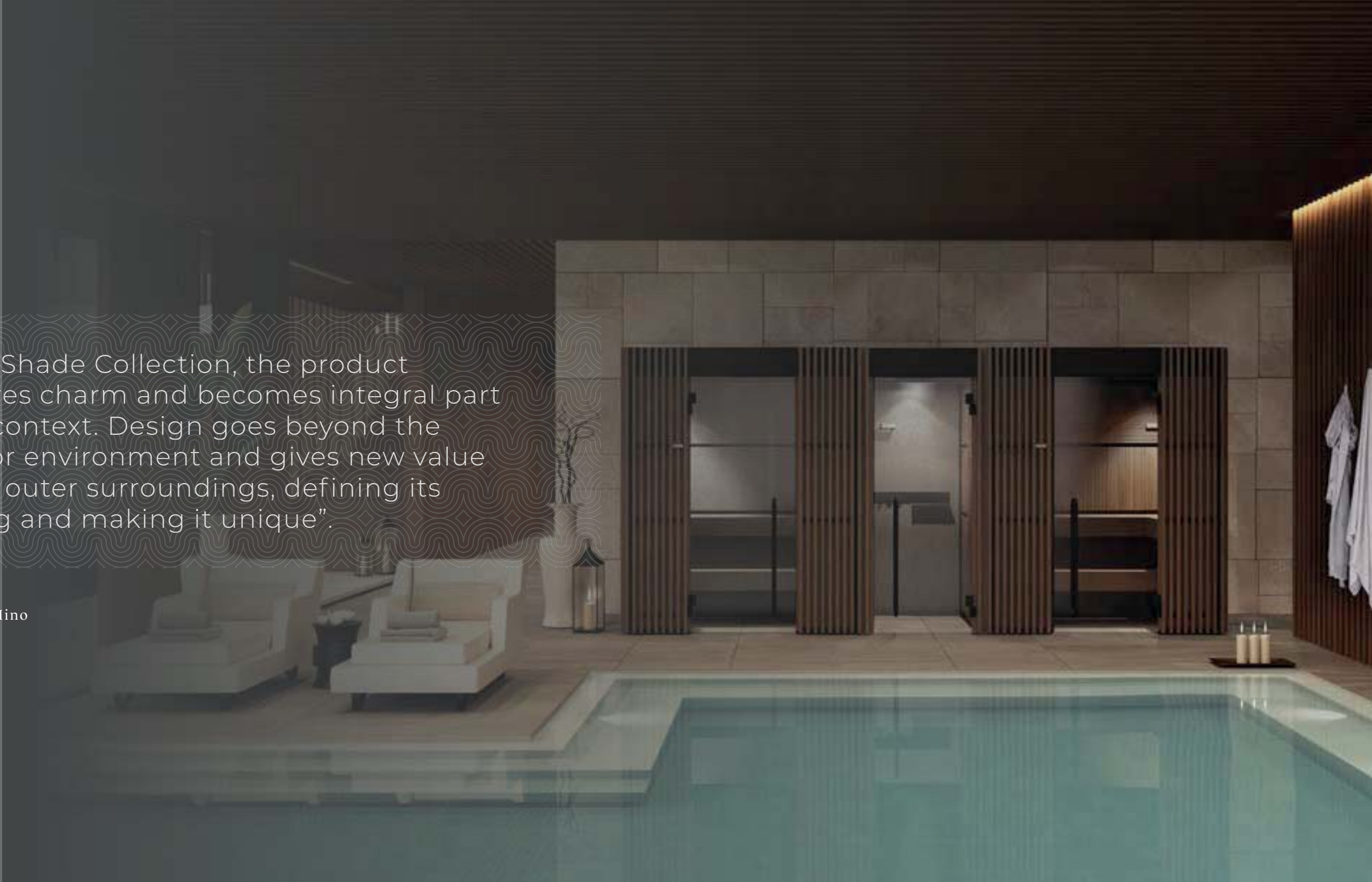
<b>Introduction</b>	43
Characteristics	44
Functional Design	46
Outfitting	48
Technical data	50
Layout	51

## SMART TECHNOLOGY

<b>Green Technology, Smart Technology</b>	54
<b>My W-Place</b>	57

## COMBINATIONS

Comparison chart	60
Possible configurations	62



“With Shade Collection, the product acquires charm and becomes integral part of its context. Design goes beyond the interior environment and gives new value to the outer surroundings, defining its setting and making it unique”.

Cristiano Mino



# *Shade Collection*

## *The new outline of wellness*

Shade Collection combines the quality of professional spas with an exclusive kind of design, **defining a new type of wellness**, to be experienced in the most intimate of places: your home.

Designed as a collection of home décor items, it is an authentic design proposal that **merges seamlessly in every room of the house.**

Oriental-inspired, it **evokes suggestive atmospheres**, thanks to the rituals, the heat, the water, and the beneficial power of the essential oils. The transparent frame, with shading panels of alternated wood slats of contemporary feel, recreates **an atmosphere of great privacy.** The skilful combination of materials, colours and volumes and the soft lighting lend to this collection **a unique and original appearance.**

Shade Collection combines the elegance of the shapes with **a new idea of sustainability** that promotes the reduction of waste materials and the optimization of available spaces and offers customised solutions. It is a cutting-edge product that encloses all the innovation of the world of Starpool, with five technological patents and an ordinary registered design.

The innovative app **My W-Place** makes Shade a “smart” collection, which completely transforms the home spa experience through remote management.



# *Shade Sauna*

The pleasantness of heat in your Wellness space



Discover more on Shade Sauna

SHADE SAUNA

# Shade Sauna

WHEREVER YOU WANT, WHENEVER YOU WANT

An oriental-inspired timeless style that combines aesthetics and function. **An intimate and elegant environment** that communicates with the outside but preserves the privacy on the inside.

The sauna seamlessly merges in every setting thanks to its exclusive design. The chosen materials combine perfectly with the uniqueness of the shapes of Shade Collection.



## Wellness at its best

Technology and top performance combine with design, which goes beyond the internal environment, and gives new value to the outer surroundings, defining the context and making it unique.



### BENEFITS

Shade Sauna is the ideal environment where to relax, reduce stress, release muscle tension, train the cardio-circulatory system and provide oxygen to the tissues thanks to the intense heat, reaching a temperature of 90-100°C and a humidity rate of 10-20%.

### RITUALS

Essential oils may be used as a paramount element in wellness rituals, in combination with our Brain Training programs: Mindfulness, breathing techniques and relaxing music. To oppose the intense heat of Shade Sauna, spray water may be used for an immediate sensation of freshness.

### TRANSPARENCY

Shade Sauna unveils its cosiness, in see-through intervals. The frame is transparent, with shading panels of alternated wood slats, thus recreating a feeling of great privacy, whilst maintaining a visual connection with the outside.

### TEXTILES

The back wall, decorated with a panelling pattern, is also equipped with a nautical elastic cable to secure the towel, which protects both the body and the wood in a functional and nice-looking way. On the outside, two practical hangers allow you to keep your towel close at hand and to enjoy a complete Wellness experience.

## Functional design

The design by Starpool is the right balance between beauty and function. The resulting environment then fulfils not just the appearance, but also meets specific requirements both in terms of space and sustainability.

### 1. DOOR

Comfort, convenience and accessibility thanks to the door, featuring a low-positioned handle, now increased in width to 87 cm.

### 2. BENCH

It can easily be moved in any direction, so that the cleaning operations are effortless.

### 3. CYLINDER

It encloses the stove making the maintenance operations easier, as well as the inspection of the compartments.

### 4. NATURAL AIR EXTRACTION

The system of natural air bottom-up extraction ensures continuous recirculation and clean air.

### 5. SAFETY AND MONITORING

The alarm button inside the cabin stops all the functions and cuts the power supply.

### 6. TECHNICAL COMPARTMENT

It is installed on the cabin roof and it is accessible thanks to a sliding system that allows to operate the ordinary maintenance with simple movements, which can be safely performed individually. The technical compartment can also be installed remotely, at a maximum distance of 10 metres.

### 7. WALLS

The system of perimeter profiles in matt black aluminium allows to create numerous smooth combinations.

The side walls can be customised: they can be blind - in Solid Surface, or transparent - in glass.

### 8. CLEANING OF GLASS WALLS

The front wooden shading panels are easily disassembled, allowing for thorough cleaning operations.

### CONVENIENCE

The installation is quick and safe. The product can be disassembled and assembled again elsewhere whenever you want.

### BE GREEN

The system GREEN PACK is fitted as standard on Shade Sauna: self-closing door, open-door detector that can stop the heat production, "Energy Efficient" software to monitor temperature maintenance.

This allows to optimize energy consumption, which is reduced and in line with home use.

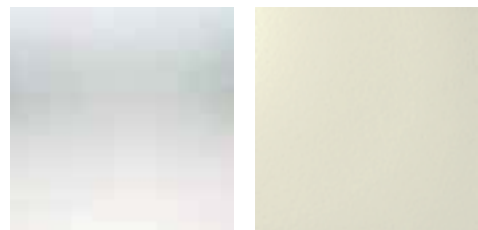


# Outfitting

## LIGHT MATERIA

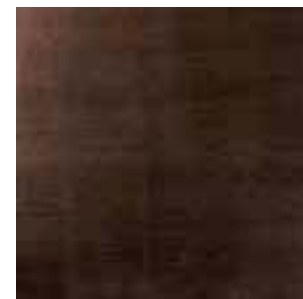


**Light Materia -  
Natural Oak**  
Benches, ceiling,  
back wall and shading  
panels in natural oak

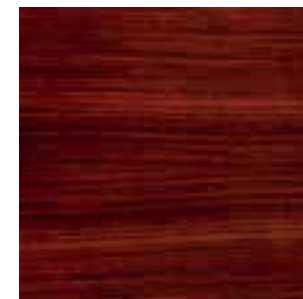


**Glass or Solid Surface**  
Side walls in glass or light Solid Surface

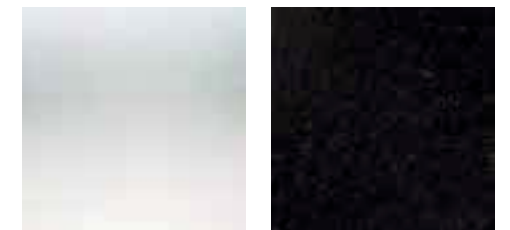
## DARK MATERIA



**Dark Materia -  
Thermowood Oak**  
Benches, ceiling, back  
wall, and shading panels  
in thermowood oak



**Dark Materia -  
Rosewood**  
Back wall and ceiling  
in rosewood; benches  
and shading panels in  
thermowood oak



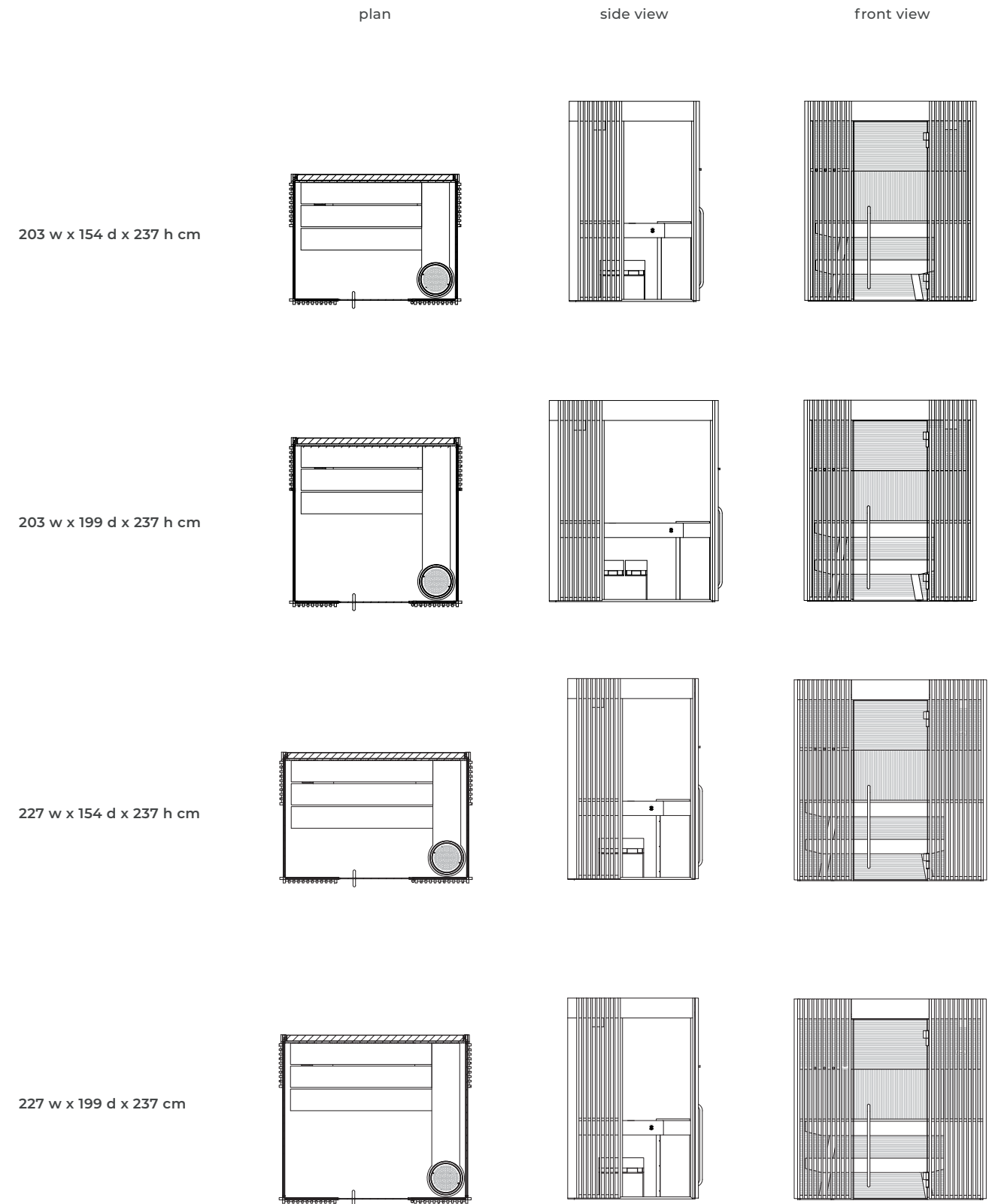
**Glass or Solid Surface**  
Side walls in glass or dark Solid Surface

# Technical data

External dimensions (cm)	158 w x 154 d x 237 h 203 w x 154 d x 237 h 203 w x 199 d x 237 h 227 w x 154 d x 237 h 227 w x 199 d x 237 h
Minimum installation dimensions (cm)	168 w x 159 d x 245 h 213 w x 159 d x 245 h 213 w x 204 d x 245 h 237 w x 159 d x 245 h 237 w x 204 d x 245 h
Total weight (Kg)	158 w x 154 d x 237 h 472 203 w x 154 d x 237 h 547 203 w x 199 d x 237 h 610 227 w x 154 d x 237 h 650 227 w x 199 d x 237 h 710
Voltage	230 Vac 1P+N+PE / 400 Vac 3P+N+PE
Maximum consumption (kW)	5 - 9
Technical specification	Finnish sauna
Temperature	90 - 100 °C
Humidity	10 - 20%
Heating	Electric stove
Lighting	Ceiling-mounted 2700° K warm-white dimmable LED spotlight with black aluminium shade
Music kit	Selection of Wellness Entertainment programs through app My W-Place
Frame / door / handles	Profiles in black anodized aluminium with sealing Door in tempered glass, w: 87 cm, th: 10mm Handle in black polished wood/steel
Structure	Clad back wall - contains all functional connections (minimum thickness 9.5 cm, U=0.67 W/m²K) Side walls in tempered glass or Solid Surface Front wall in tempered glass
Functions	
ON / OFF	Through My W-Place
Lighting	Through app My W-Place
Audio + Music	Through app My W-Place
Alarm	Through button inside sauna

# Layout

Layout A



SHADE SAUNA

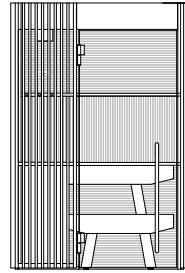
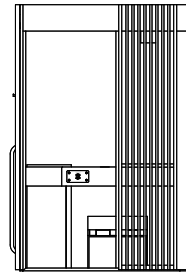
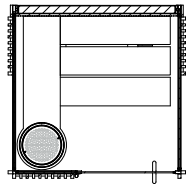
Layout B

plan

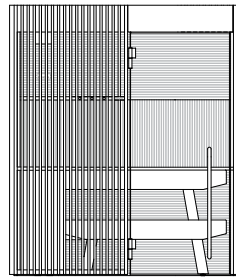
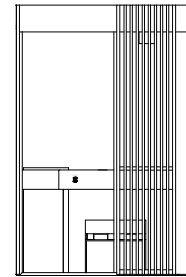
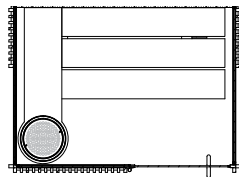
side view

front view

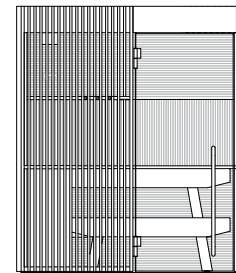
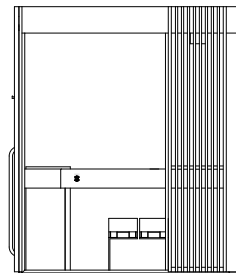
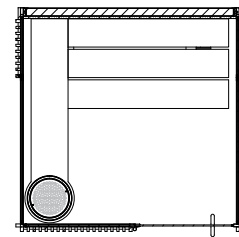
158 w x 154 d x 237 h cm



203 w x 154 d x 237 h cm



203 w x 199 d x 237 h cm



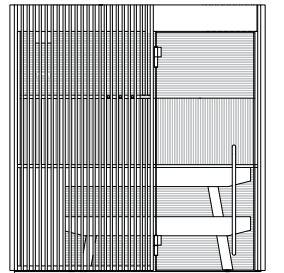
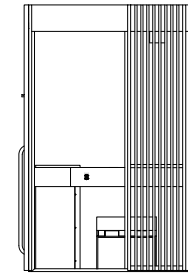
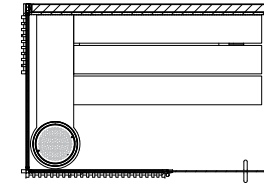
SHADE SAUNA

plan

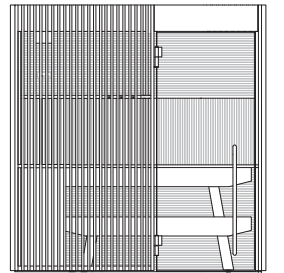
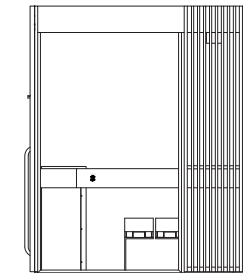
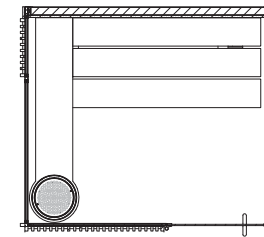
side view

front view

227 w x 154 d x 237 h cm



227 w x 199 d x 237 cm



SHADE SAUNA

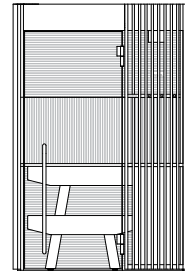
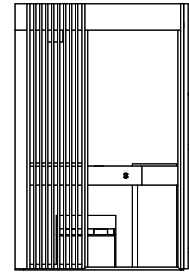
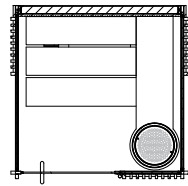
Layout C

plan

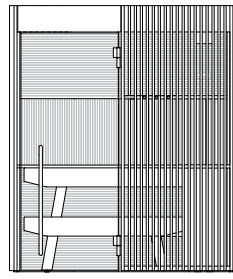
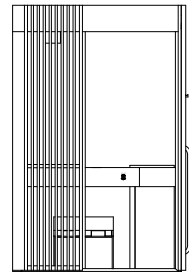
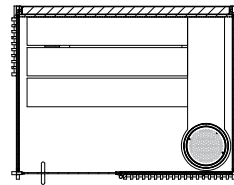
side view

front view

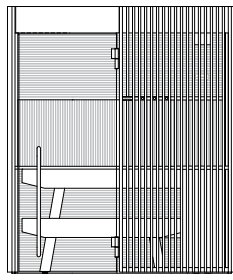
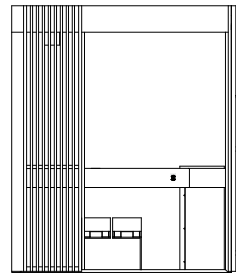
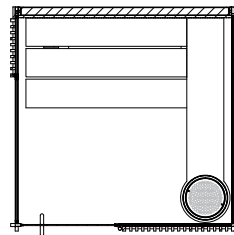
158 w x 154 d x 237 h cm



203 w x 154 d x 237 h cm



203 w x 199 d x 237 h cm



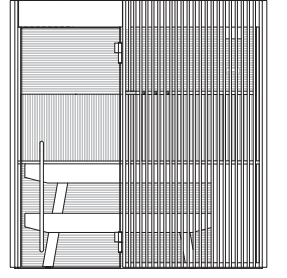
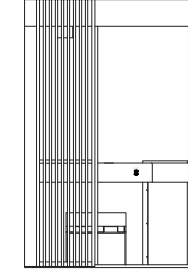
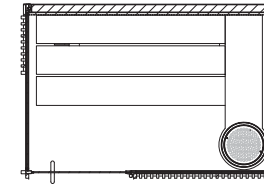
SHADE SAUNA

plan

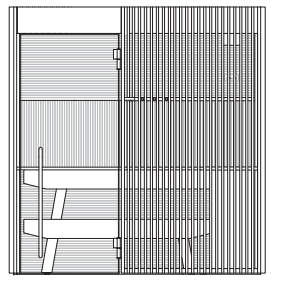
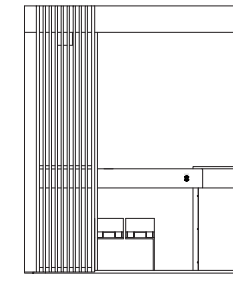
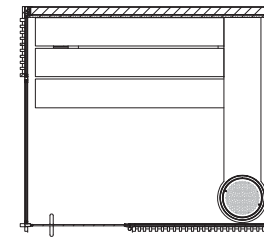
side view

front view

227 w x 154 d x 237 h cm



227 w x 199 d x 237 cm



A modern steam room featuring a large, white, freestanding bathtub on the left. To the right is a shower area enclosed by vertical wooden slats. The shower area includes a white vanity with a black faucet and a black showerhead. The room has large windows in the background, providing a view of greenery. The floor is made of light-colored wood. The overall design is minimalist and contemporary.

# *Shade Steam Room*

The exclusivity of a state-of-the-art steam bath



Discover more on Shade Steam Room

SHADE STEAM ROOM

# Shade Steam Room

WELLNESS AND COMFORT ANYWHERE YOU WANT

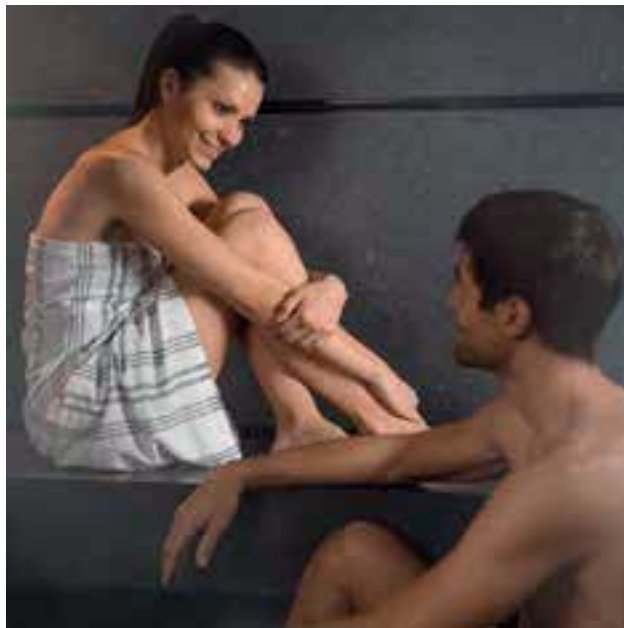
Much more than a steam bath,  
it is a **special environment for your well-being.**

The seats made of few monolithic blocks with nature-inspired materials, the light and dark stone colour, the flat shelf equipped with a small basin for the rituals, and the soft lighting lend an original appearance to the steam bath.



## *Design, technology and style for your wellness rituals*

An innovative design proposal developed as a home décor item, which offers exclusive moments of regeneration and relaxation thanks to the sophisticated technology and performance.



### BENEFITS

Air, steam and scented fragrances combine and gently rest on the skin, making natural exfoliation easier and increasing perspiration.

The temperature of 45°C and the humidity rate of 98% relax the body naturally, favouring the production of serotonin, the hormone of happiness, and help to strengthen the airways defence.

### RITUALS

The essential oils lend their scent to the water inside the small basin, located on the cylinder containing the steam source, and release relaxing fragrances. The exfoliating scrub allows to make the most of the beneficial effects of the steam on the skin.

The washing ritual, inspired by the Middle Eastern culture, can be performed to purify body and mind.



### TRANSPARENCY

Shade Steam Room unveils its cosiness, in see-through intervals. The frame is transparent, with shading panels of alternated wood slats, thus recreating a feeling of great privacy, whilst maintaining a visual connection with the outside.

### TEXTILES

The back wall, decorated with a panelling pattern, is also equipped with a nautical elastic cable to secure the towel temporarily inside the cabin.

In this way, the seat becomes even more comfortable and soft, and the bench is protected from the action of the cosmetic products. On the outside, practical hangers enrich the vertical shading panel to keep your towel close at hand, and to enjoy a complete Wellness experience.

## Functional design

The design by Starpool is the right balance between beauty and function.

The resulting environment then fulfils not just the appearance, but also meets specific requirements both in terms of space and sustainability.

### 1. DOOR

Comfort, convenience and accessibility thanks to the door, featuring a low-positioned handle, now increased in width to 87 cm.

### 2. BENCH

It can easily be moved in any direction, so that the cleaning operations are effortless.

### 3. NO GROUTING

Less than 1% of the glass or Solid Surface cladding surface is grouted, which makes Shade Steam Room the product that offers the best level of hygiene.

### 4. CYLINDER

The steam inlet inside the cabin is obtained through a black-finish cylinder, which serves as a support for the flat shelf.

### 5. SHOWERHEAD

Ceiling-installed and realised in pvd black steel, with a central white light. It is an extra accessory.

### 6. HAND SHOWER AND BASIN

An only solution that includes: mixer to control water temperature and diverter to activate the hand shower or the showerhead. There is also a basin for rituals, with a specific tap supplying cold water.

### 7. TECHNICAL COMPARTMENT

It is installed on the cabin roof, and it is accessible thanks to a sliding system that allows to operate the ordinary maintenance with simple movements, which can be performed safely and individually. The technical compartment can be installed up to 10 meters from the cabin.

### 8. SAFETY AND MONITORING

The alarm button inside the cabin stops all the functions and cuts the power supply.

### 9. WALLS

The system of perimeter profiles in matt black aluminium allows to create numerous smooth combinations. The back wall is in Solid Surface, while the two side walls can be customised: they can be blind in Solid Surface, or transparent in glass.

### 10. CLEANING OF GLASS WALLS

The front wooden shading panels are easily disassembled, allowing for thorough cleaning operations.

### CONVENIENCE

The installation is quick and safe. The product can be disassembled and assembled again at elsewhere whenever you want.

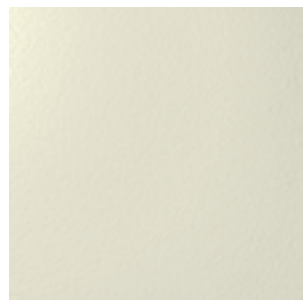
### BE GREEN

The system GREEN PACK is fitted as standard on Shade Steam Room: self-closing door, open-door detector that can stop the heat production, "Energy Efficient" software to monitor temperature maintenance. This allows to optimize energy consumption, which is reduced and in line with home use.



# Outfitting

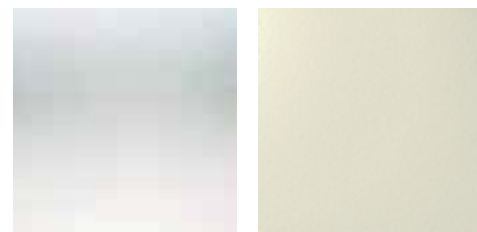
## LIGHT MATERIA



**Light Materia**  
Back wall and benches  
in light Solid Surface



**Light Materia -  
Natural Oak**  
External shading panel  
in natural oak



**Glass or Solid Surface**  
Side walls in glass  
or light Solid Surface

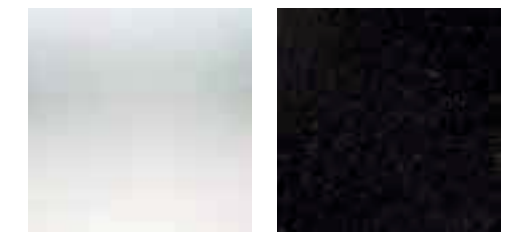
## DARK MATERIA



**Dark Materia**  
Back wall and benches  
in dark Solid Surface



**Dark Materia -  
Thermowood Oak**  
External shading panels  
in thermowood oak



**Glass or Solid Surface**  
Side walls in glass  
or dark Solid Surface

# Technical data

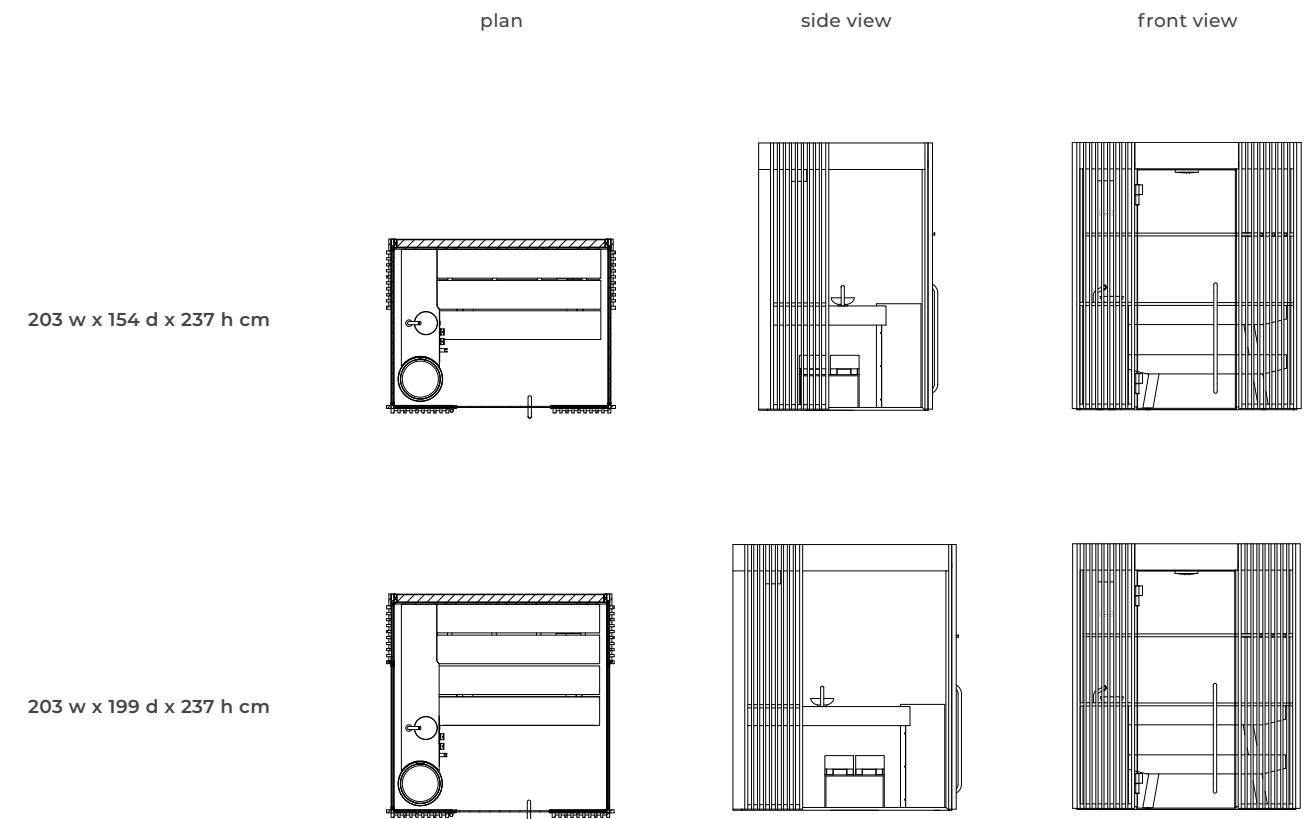
External dimensions (cm)	158 w x 154 d x 237 h 203 w x 154 d x 237 h 203 w x 199 d x 237 h
Minimum dimensions for installation (cm)	168 w x 159 d x 245 h 213 w x 159 d x 245 h 213 w x 204 d x 245 h
Total weight (Kg)	158 w x 154 d x 237 h      472 203 w x 154 d x 237 h      547 203 w x 199 d x 237 h      610
Voltage	230 Vac 1P+N+PE / 400 Vac 3P+N+PE
Maximum consumption (kW)	3.5 - 6.5
Technical specification	Steam bath
Temperature	43 - 45 °C
Humidity	98%
Heating	Direct steam inlet
Water fittings	Ceiling-mounted Ø 20 cm showerhead (extra)/ Diverter / Thermostatic mixer  Tap + basin for rituals and fragrances
Lighting	Ceiling-mounted 2700° K warm-white dimmable LED spotlight with black aluminium shade
Music kit	Selection of Wellness Entertainment programs through app My W-Place
Frame / door / handles	Profiles in black anodized aluminium with sealing Door in tempered glass, w: 87 cm, th: 10 mm Handle in black polished steel/steel, l: 98cm
Structure	Clad back wall - contains all functional connections (minimum thickness 8.7 cm, U=0.49 W/m²K) Side walls in tempered glass or Solid Surface Front wall in tempered glass

## Functions

ON / OFF	Through app My W-Place
Lighting	Through app My W-Place Through
Sound + Music	Through app My W-Place
Alarm	Button inside the steam bath

# Layout

## Layout A



SHADE STEAM ROOM

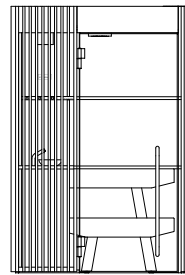
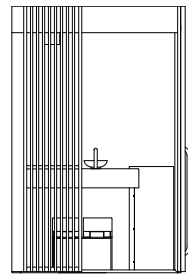
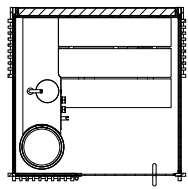
Layout B

plan

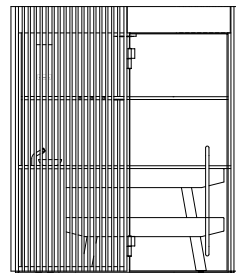
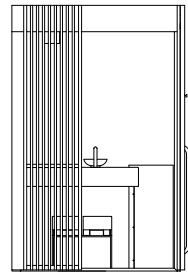
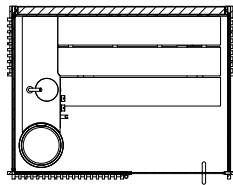
side view

front view

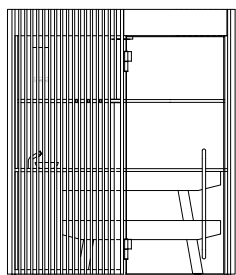
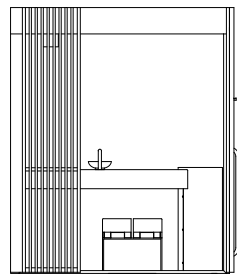
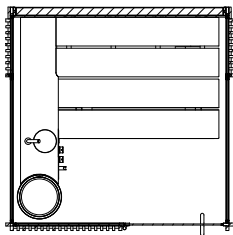
158 w x 154 d x 237 h cm



203 w x 154 d x 237 h cm



203 w x 199 d x 237 h cm



SHADE STEAM ROOM

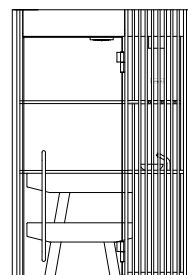
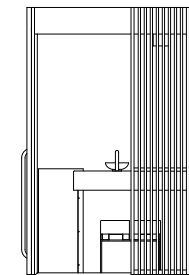
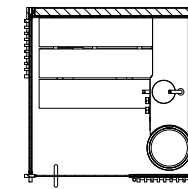
Layout C

plan

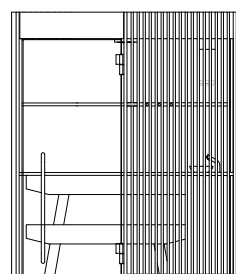
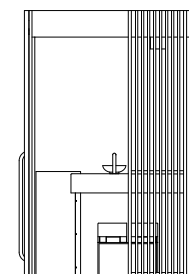
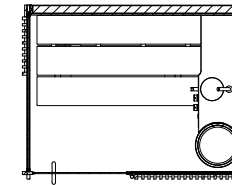
side view

front view

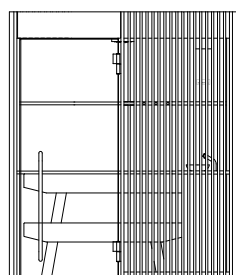
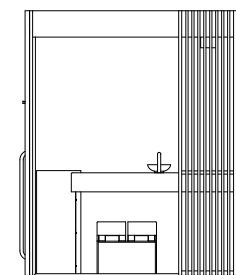
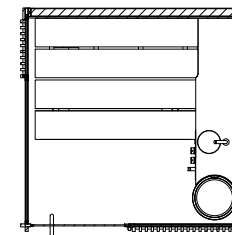
158 w x 154 d x 237 h cm



203 w x 154 d x 237 h cm



203 w x 199 d x 237 h cm





# *Shade Shower*

Extraordinary comfort, every day



# Shade Shower

THE REGENERATING POWER OF WATER

Shade Shower is the cosy and comfortable environment where you can **let yourself be embraced by all the sensations that only water can give.**

It is equipped with an elegant and practical support to place the shower products. The ceiling-mounted showerhead, the soft lighting and the black water fittings lend a unique appearance to the whole space.



## *Complete your wellness*

A unique product that encloses the pleasant sensations of water and lends a new personality to the surrounding space.



### BENEFITS

Shade Shower ensures the recovery of physical balance thanks to various cold reactions. This is possible thanks to the jet intensity and the water temperature, which can be adjusted to specific individual needs.

### LIGHTING

A beam of warm, white light is cast from the central part of the showerhead.

### MULTI-FUNCTION HAND SHOWER

The special multi-function hand shower can be used to rinse the body before entering the cabin, without getting your hair wet, or as a cold reaction after the heat session, starting from the legs and up to the head. It is also practical to rinse the shower walls easily.

### TEXTILES

Practical hangers characterised by sophisticated design are installed on the outside, to allow you to have your towel right at hand at the end of the shower or of the cold reaction.

## Functional design

The design by Starpool is the right balance between beauty and function.

The resulting environment then fulfils not just the appearance, but also meets specific requirements both in terms of space and sustainability.

### 1. DOOR

Comfort, convenience and accessibility thanks to the door now increased in width to 87 cm. It is an extra accessory.

### 2. SHOWERHEAD

The central showerhead has a 36-cm diameter and a black-metal finish which defines its elegant style. Together with its special light, it offers a unique wellness experience.

### 3. NO GROUTING

Less than 1% of the glass or Solid Surface cladding surface is grouted, which makes Shade Shower the product that offers the best level of hygiene.

### 4. SHOWER AND HAND SHOWER

An only solution that includes: mixer to control water temperature and diverter to activate the wall-mounted hand shower or the showerhead.

### 5. WALLS

The system of perimeter profiles in matt black aluminium allows to create numerous smooth combinations. The side walls can be customised: they can be blind in Solid Surface, or transparent in glass.

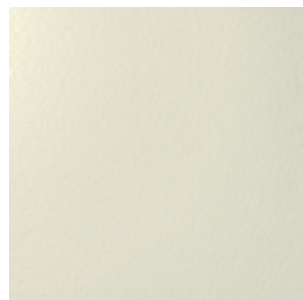
### CONVENIENCE

The installation is quick and safe. The product can be disassembled and assembled again elsewhere whenever you want.



# Outfitting

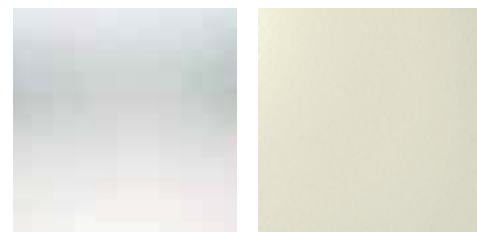
## LIGHT MATERIA



**Light Materia**  
Back wall in light  
Solid Surface



**Light Materia -  
Natural Oak**  
External shading panel  
in natural oak



**Glass or Solid Surface**  
Side walls in glass or light  
Solid Surface

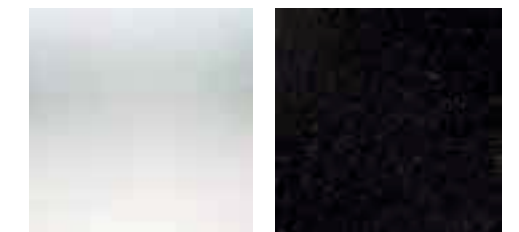
## DARK MATERIA



**Dark Materia**  
Back wall in dark  
Solid Surface



**Dark Materia -  
Thermowood Oak**  
External shading panels  
in thermowood oak

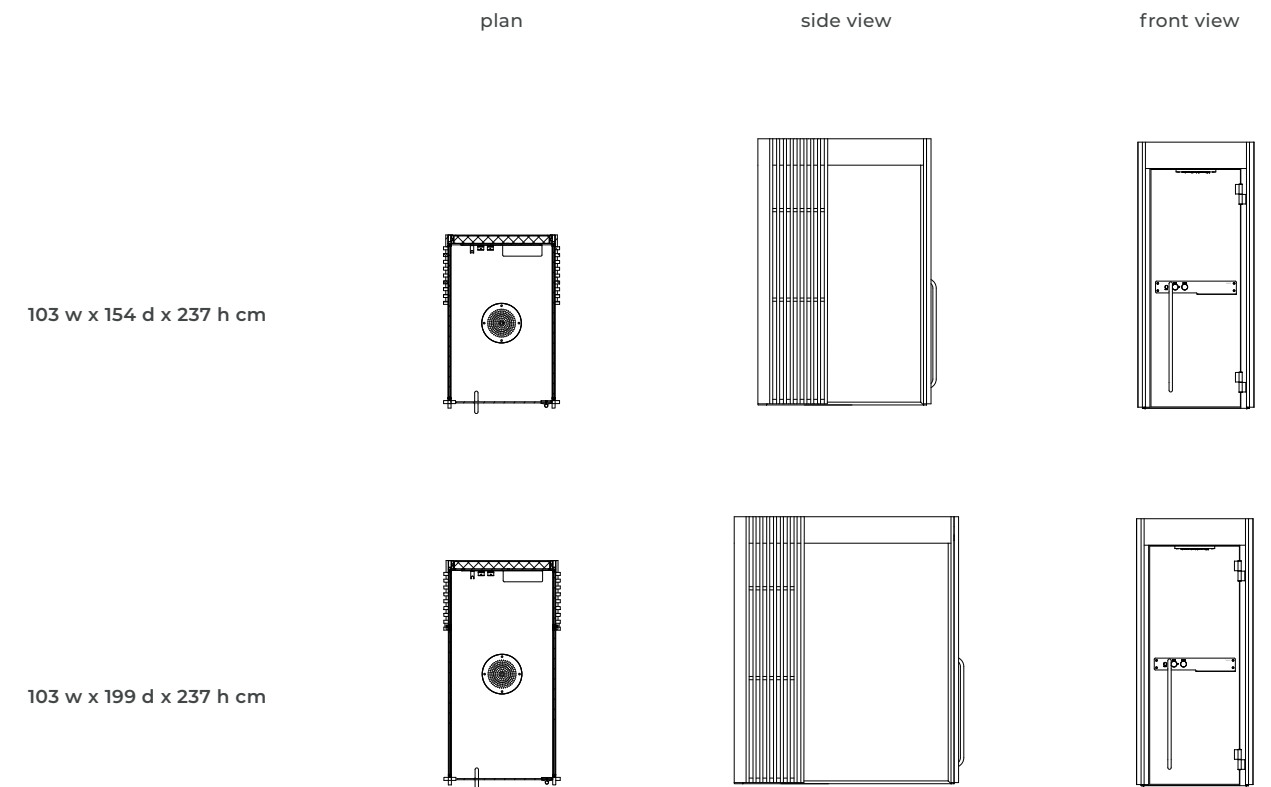


**Glass or Solid Surface**  
Side walls in glass or dark  
Solid Surface

# Technical data

External dimensions (cm)	103 w x 154 d x 237 h 103 w x 199 d x 237 h
Minimum dimensions for installation (cm)	113 w x 159 d x 245 h 113 w x 204 d x 245 h
Voltage	230 Vac 1P+N+PE
Maximum consumption (kW)	0.2
Technical specification	Shower
Water fittings	Ceiling-mounted showerhead Ø 36 cm Diverter Thermostatic mixer
Lighting	Ceiling-mounted 2700° K warm-white non-dimmable LED spotlight installed in the showerhead
Frame / door / handles	Profiles in black anodized aluminium with sealing Door in tempered glass, w: 87 cm, th: 10 mm Handle in black polished steel/steel, l: 98cm
Structure	Clad back wall - contains all functional connections (minimum thickness 8.7 cm, U=0.49 W/m²K) Side walls in tempered glass or Solid Surface Front wall as an extra in tempered glass

# Layout





# *Shade Accessories*

The pleasantness of heat in your Wellness space

# Shade Accessories

Shade Collection, designed and developed for the home environment, led to the creation of four décor items with the same design, and making up the collection Shade Accessories.

Shade Lounger, Shade Bench, Shade Table and Shade Stand perfectly embody the **Japandi style**, that is the harmonious union between the **minimalist Japanese aesthetics and the functionality of Scandinavian products**. The result is a comfortable and fascinating environment, characterised by **clean lines and simple shapes**. These accessories turn interiors into relaxation oases where comfort reigns supreme, without sacrificing style and aesthetics.

The collection reflects the contemporary trend of a **return to simplicity and authenticity**, meeting the growing desire for environments that promote peace and well-being. Each item of Shade Collection was designed with **utmost care to detail**, to create unique and cosy spaces to enjoy moments of peace in total comfort.

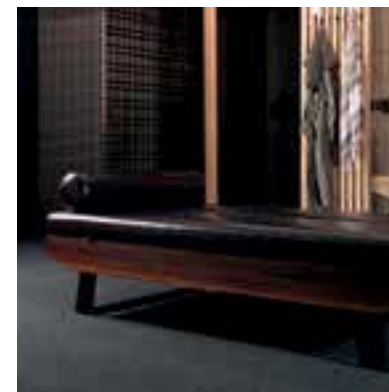


## SHADE TABLE

Sophisticated appearance and bold design

Characterised by a minimalist design, this table embodies order and balance with neat lines and dark finishes.

Available in two dimensions, it blends perfectly in any environment offering elegance and function.



## SHADE LOUNGER

Minimalist appearance and Scandinavian functionality

Shade Lounger combines the minimalist Japanese elegance with Scandinavian practicality, inspiring relaxation and well-being through clean-cut lines, carefully designed ergonomics and high-quality materials to adjust to any environment with its timeless elegance.



## SHADE BENCH

Clean-cut lines and essential shape

Shade Bench stems from the reinterpretation benches of Shade Sauna with a modern feel. This bench has a simple and neat design and is realised with high-quality materials, ensuring optimum comfort and duration over time.



## SHADE STAND

The perfect union between functionality and aesthetics

A towel stand with a strong visual identity lending the surrounding space a minimalist and contemporary design which blends perfectly in any interior style. It is ideal not only for home use, but also for hotels and Wellness centres.

## *Shade Bench*

Dimensions (cm)	1800 w x 750 d x [400 ÷ 560] h
Structure	Plywood with steel feet
Base	Veneered plywood coated with weather-resistant varnish, black-polished aluminium feet
Covering	High-density polyurethane foam covered with polyester wadding
Net weight [Kg]	70
Max operating weight [Kg]	70 + 150



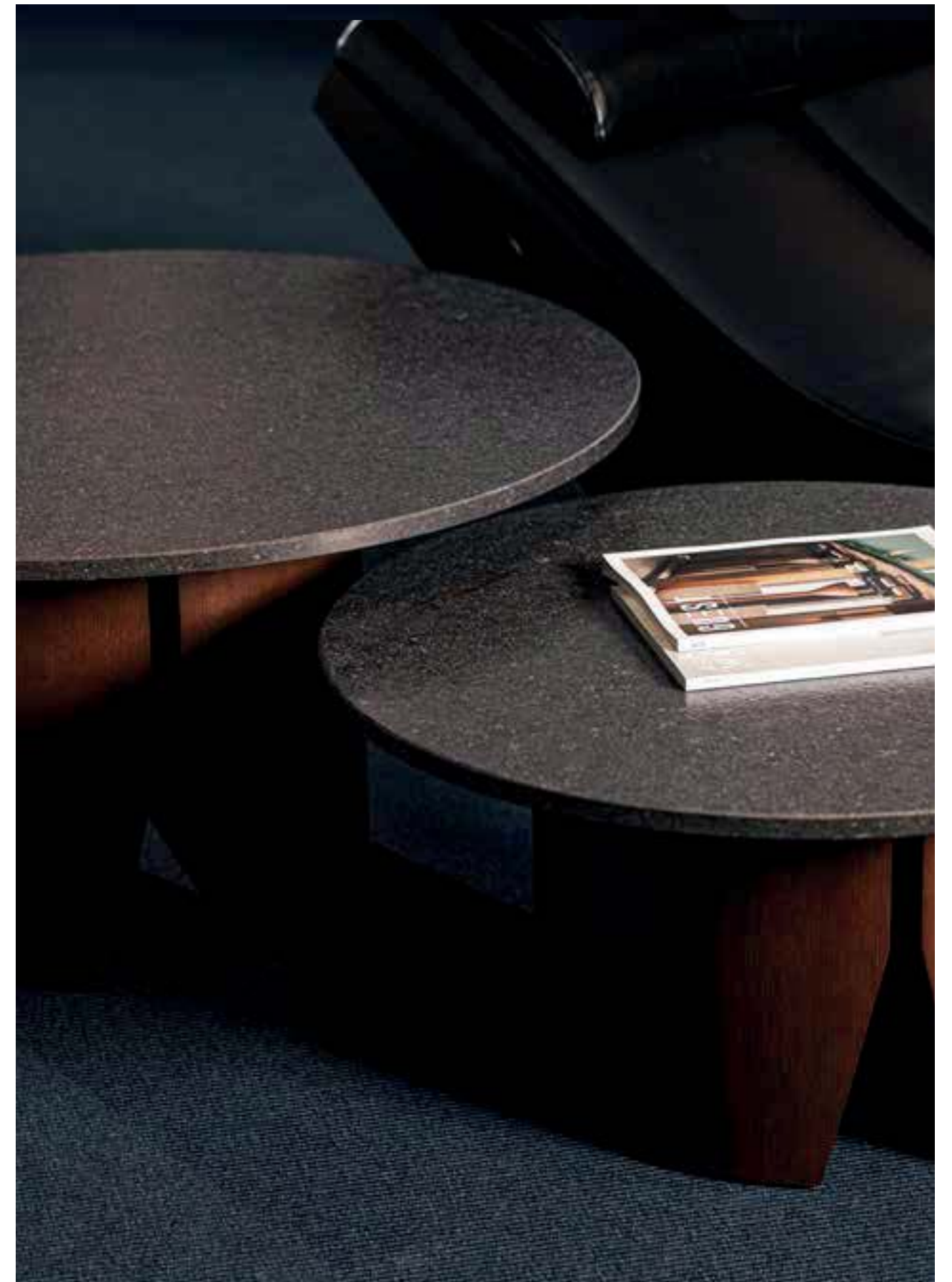
## *Shade Lounger*

Dimensions (cm)	1860 w x 750 d x [401 ÷ 670] h
Structure	Plywood with steel feet
Base	Veneered plywood coated with weather-resistant varnish, black-polished aluminium feet
Beams	High-density polyurethane foam covered with polyester wadding
Net weight [Kg]	50
Max operating weight [Kg]	50 + 150



## Shade Table

Dimensions (cm)	Type A	[750 ÷ 450] ø x 430 h
	Type B	[950 ÷ 450] d x 350 h
Structure	Plywood with e piano in solid surface	
Base	Veneered plywood coated with weather-resistant varnish	
Surface	Solid Surface	
Net weight [Kg]	Type A	20
	Type B	30
Max operating weight [Kg]	Type A	20 + 30
	Type B	30 + 30



## *Shade Stand*

Dimensions (cm)	900 w x 220 d x 980 h
Structure	Oakwood with steel support
Base	Support in black polished steel
Beams	Oakwood coated with weather-resistant varnish
Net weight [Kg]	5
Max operating weight [Kg]	5 + 3



# Covering Materials

**Base\***

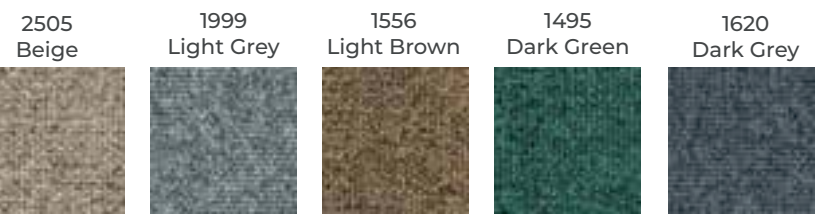
Light Materia  
Natural Oak



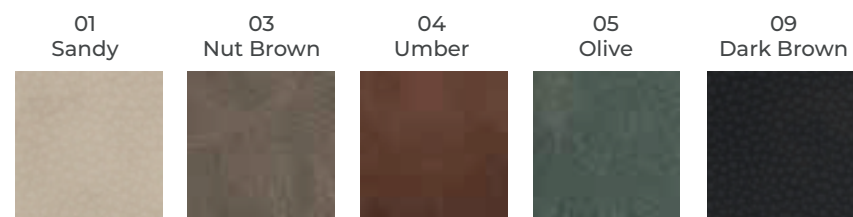
Dark Materia  
Thermowood Oak



**Fabric**



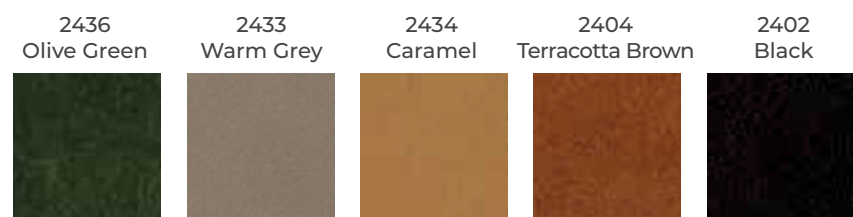
**Vintage  
Eco-Leather**



**Sky  
Eco-Leather**



**Real Leather**



\* The cladding for the base can be applied to all accessories, except for Shade Stand available only in Dark Materia Thermowood Oak

NB: The colours of the fabrics shown here serve purely as an indication, as they are subject to printed colour change. For an accurate idea of the texture and colour types, we recommend consulting the Textile Samples Book.



*Smart  
Technology*

## Green Technology, Smart Technology

We believe in the added value given by the **respect for the environment**. We think that our work in the service of Wellness should contribute to creating **a greener and greener future**.



For this reason, our products feature solutions that **reduce energy consumption** and automate their functions.

**We develop sustainable products and technologically performing systems**, we increase the connectivity to a computer network that is more and more sophisticated and, at the same time, user-friendly.

To bring the world of wellness into your daily life, and make a kind of technology that is more and more complex and advanced accessible to all.



Discover more on our technological solutions and innovations



### GREEN PACK

Our Research & Development department designed a system to improve the functions of our products. By installing Green Pack, it is possible to **reduce energy consumption** thanks to **smart detectors** that prevent needless steam leakage, control the heat and humidity of the environment, and maintain a constant temperature through the energy load management. **A sophisticated system that allows an average energy saving of 20%.**



### ECO SPA TECHNOLOGY

An innovative control system to bring together all our product devices. **It is a management software, installed in each one of our products**, that allows to measure constantly and in real time the fundamental parameters of the equipment. **It monitors the equipment and allows for the automated management, remote diagnostics, and optimization of energy loads.**



### SIM 4.0

**Telemetry for each installed spa product**, it is a type of software that allows to **constantly measure the essential parameters of the equipment**. It monitors the usage of the products, detects any drop in performance, as well as anomalies and alarms. It controls the energy load in real time, so that it is possible to intervene before the problem occurs. **Its Business Intelligence provides a report** with the performance of the spa and the consumption of the equipment.



### MY W-PLACE

We believe that technology has the power to improve many aspects of every-day life. This is why we wanted to create **My W-Place, our intuitive, practical, complete app**, which offers **valuable support in managing your spa remotely** and improves the wellness experience with a number of quality contents, such as **Mindfulness and guided breathing programs, music, and the latest news from the world of Wellness.**



# *My W-Place*

Your wellness right at hand

Technology in the service of well-being with **My W-Place**, our innovative app that **allows you to control and manage your home spa remotely**.

You can schedule when to switch on one or more products of Shade Collection, manage your settings, temperature, and lights, and always have our **Brain Training programs** developed with renowned partners in the fields of science and sport right at hand.

**Mindfulness, guided breathing techniques** and **relaxing music tracks** can be used in combination with our spa products or whenever you want to make wellness integral part of your daily routine.

**Every wellness program can be customised** with My W-Place: it is possible to choose from our protocols of usage the ones that are the most suited to **achieve one's wellness goals** and to work effectively on stress management, sleep, performance, and longevity.

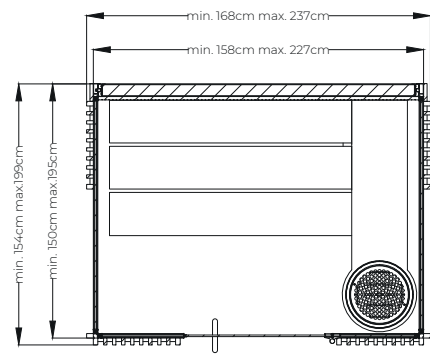


# *Combinations*

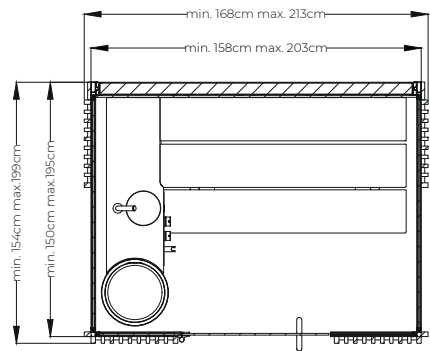
# Possible configurations

Single products

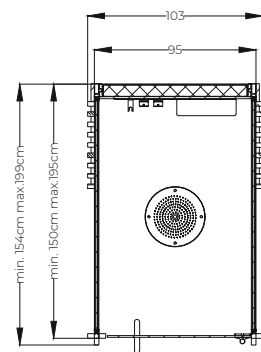
Shade Sauna



Shade Steam Room

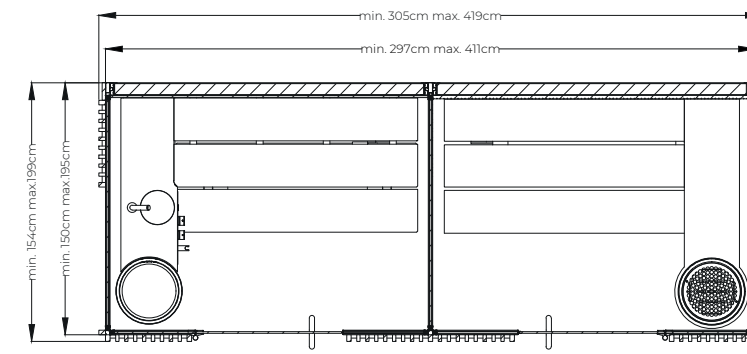


Shade Shower

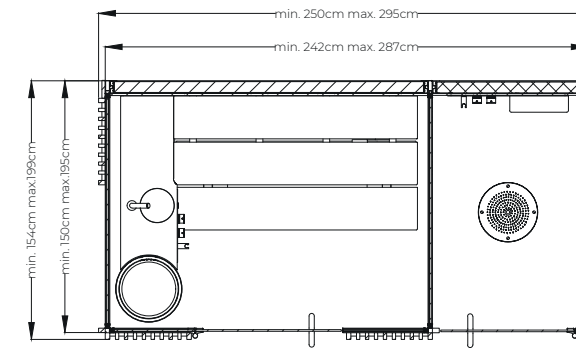


Combinations

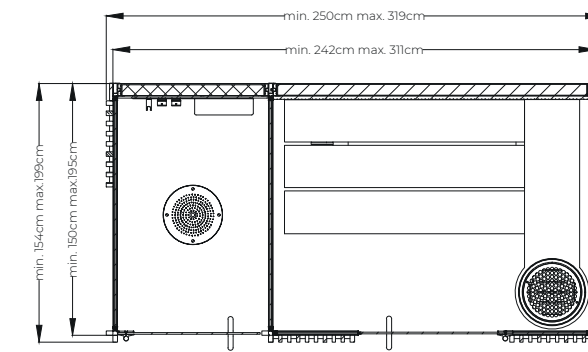
Shade Steam Room + Shade Sauna



Shade Steam Room + Shade Shower



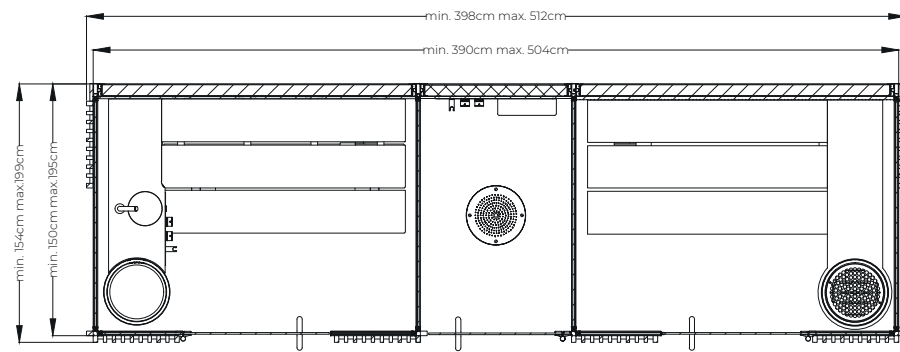
Shade Shower + Shade Sauna



## COMBINATIONS

### Combinations

#### Shade Steam Room + Shade Shower + Shade Sauna



Shade Collection is **extremely versatile** and there are numerous possible combinations, each blending perfectly in the environment where they are installed.

Those listed here are only a few possibilities. The structure, the type of layout and the cabin dimensions can be adjusted, and everyone can choose the solutions that best suit their needs.





**STARPOOL**

wellness concept

Via Stazione 25 · 38030 Ziano di Fiemme (TN) · Italy  
+39 0462 571 881 · [info@starpool.com](mailto:info@starpool.com)  
**[starpool.com](http://starpool.com)**