

outdoor
BUILT-IN

Price list

VAT excluded

EXP.26



Since 2005

INDICE

index

outdoor BUILT-IN

ELECTRIC collection

pg 2

B.IN EL 80

B.IN EL 55

B.IN INDU

B.IN FR

GAS collection

pg 6

B.IN 80.L

B.IN 80.LR

B.IN 80MIX.L

B.IN 80MIX.LR

B.IN 80MIX.GRILL.L

B.IN 80GRILL.R/LL

B.IN 55.L

B.IN 55.LR

B.IN 80COMBI.L

B.IN 80COMBI.LR

B.IN 55COMBI.L

B.IN 55COMBI.LR

B.IN F1

B.IN F2

B.IN F3

Accessori / Accessories

pg 22

BUILT-IN

UNIVERSALI

Schede installazione / Installation Instructions

pg 28



Piano cottura: **ELETTRICO**

Electric Cooktop / Plaque de cuisson électrique / Elektrische Kochplatte

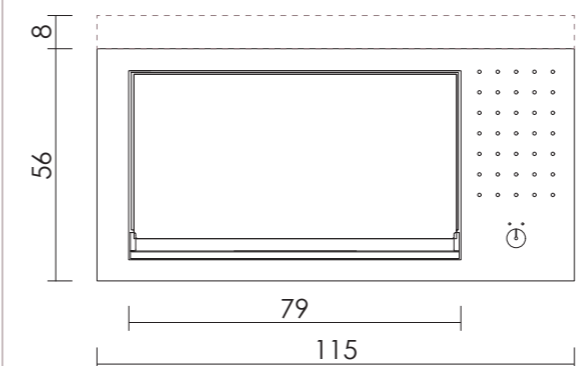


B.IN EL80

0203204 (+ coperchio opzionale / optional lid *)

Piastra liscia, elettrica, incasso

Built-in electric smooth cooking plate
Plaque de cuisson lisse électrique encastrable
Glatte Elektroplatte zum Einbau



L 115 x P 56 cm

49 Kg

10-12

Potenza / Power: 3.12 kW 220-230 V 50-60 Hz

* Coperchio Inox (cod. **0206131**) o Nero (cod. **0206131F01**)
Stainless steel lid (code **0206131**) or black lid (code **0206131F01**)
Couvercle en acier inoxydable (réf. **0206131**) ou noir (réf. **0206131F01**)
Edelstahlabdeckung (Artikel-Nr. **0206131**) oder schwarzer Abdeckung (Artikel-Nr. **0206131F01**)

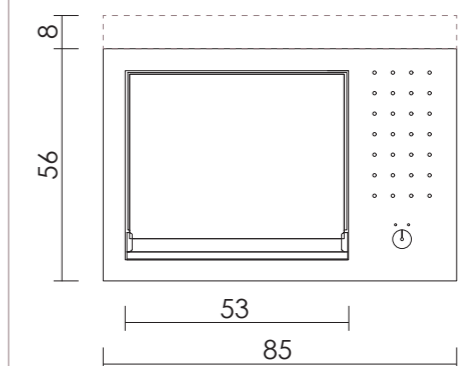
		€ (VAT excl.)
0203204	Piastra	2.420,00
0206131	Coperchio Inox	463,00
0206131F01	Coperchio Nero	628,00

B.IN EL55

0203203 (+ coperchio opzionale / optional lid *)

Piastra liscia, elettrica, incasso

Built-in electric smooth cooking plate
Plaque de cuisson lisse électrique encastrable
Glatte Elektroplatte zum Einbau



L 85 x P 56 cm

47 Kg

6-8

Potenza / Power: 2.08 kW 220-230 V 50-60 Hz

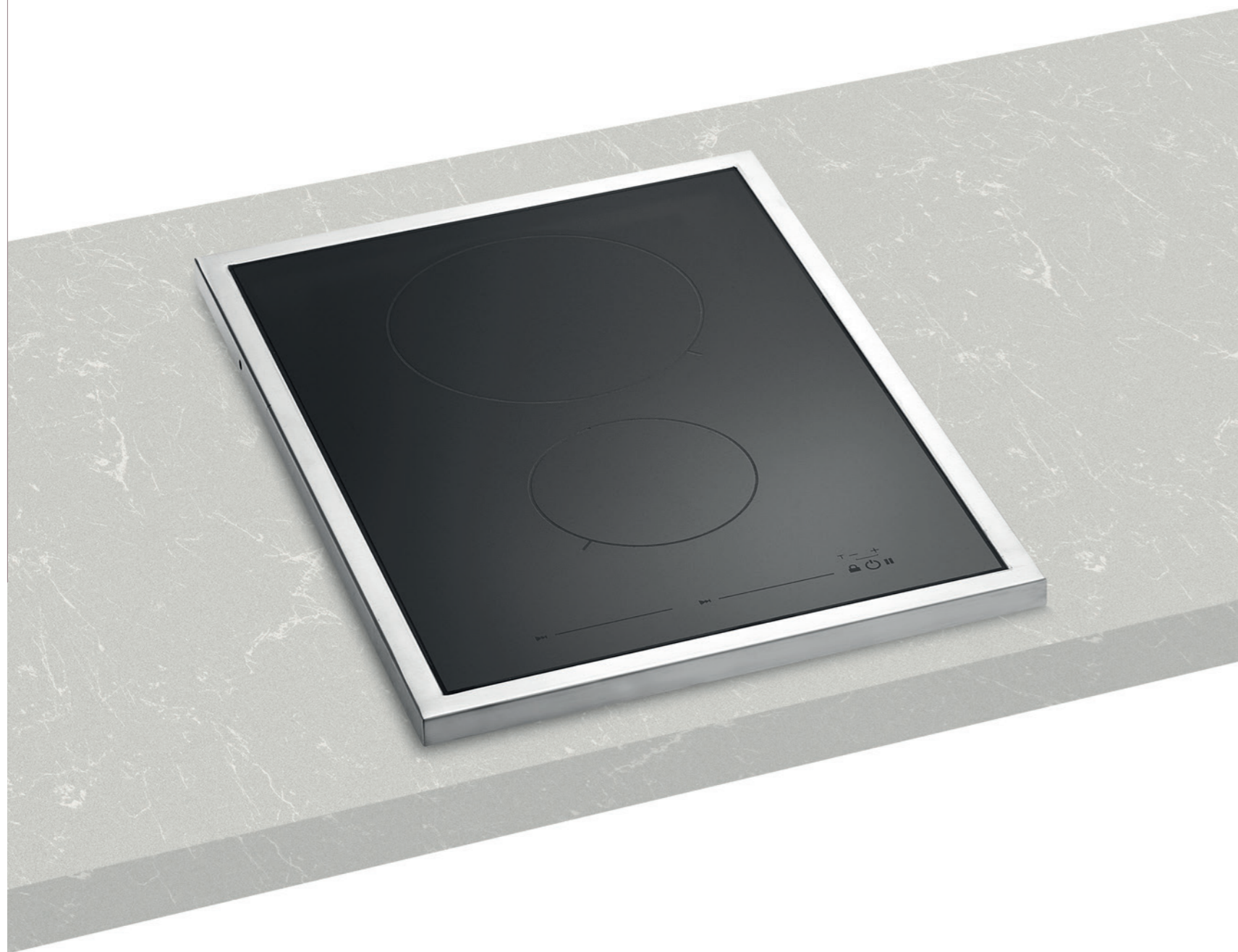
* Coperchio Inox (cod. **0206133**) o Nero (cod. **0206133F01**)
Stainless steel lid (code **0206133**) or black lid (code **0206133F01**)
Couvercle en acier inoxydable (réf. **0206133**) ou noir (réf. **0206133F01**)
Edelstahlabdeckung (Artikel-Nr. **0206133**) oder schwarzer Abdeckung (Artikel-Nr. **0206133F01**)

		€ (VAT excl.)
0203203	Piastra	1.793,00
0206133	Coperchio Inox	374,00
0206133F01	Coperchio Nero	539,00



Piano cottura: **ELETTRICO**

Electric Cooktop / Plaque de cuisson **électrique** / **Elektrische** Kochplatte

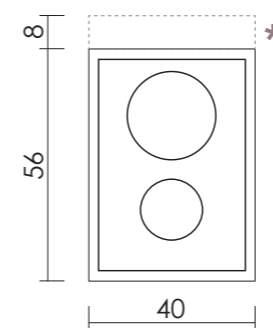


B.IN INDU

0207061 (+ coperchio opzionale / optional lid *)

Piano a induzione, incasso

Built-in Induction hob
Plaque à induction encastrable
Einbau-Induktionskochfeld



L 40 x P 56 cm

11 Kg

Potenza / Power: 3.7 kW 220-230 V 50-60 Hz

* Coperchio Inox (cod. **0206136**) o Nero (cod. **0206136F01**)
Stainless steel lid (code **0206136**) or black lid (code **0206136F01**)
Couvercle en acier inoxydable (réf. **0206136**) ou noir (réf. **0206136F01**)
Edelstahlabdeckung (Artikel-Nr. **0206136**) oder schwarzer Abdeckung (Artikel-Nr. **0206136F01**)

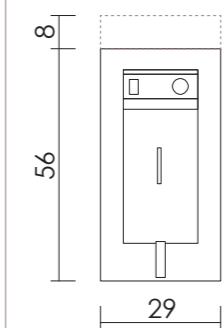
		€ (VAT excl.)
0207061	Piano	1.947,00
0206136	Coperchio Inox	261,00
0206136F01	Coperchio Nero	372,00

B.IN FR

0207060 (+ coperchio opzionale / optional lid *)

Friggitrice elettrica, capacità 4 Lt, incasso

4-L Electric Built-in Fryer
Friteuse électrique encastrable, 4 L
Einbau-Elektrofritteuse, 4 L



L 29 x P 56 cm

11 Kg

Potenza / Power: 2.2 kW 220-230 V 50 Hz

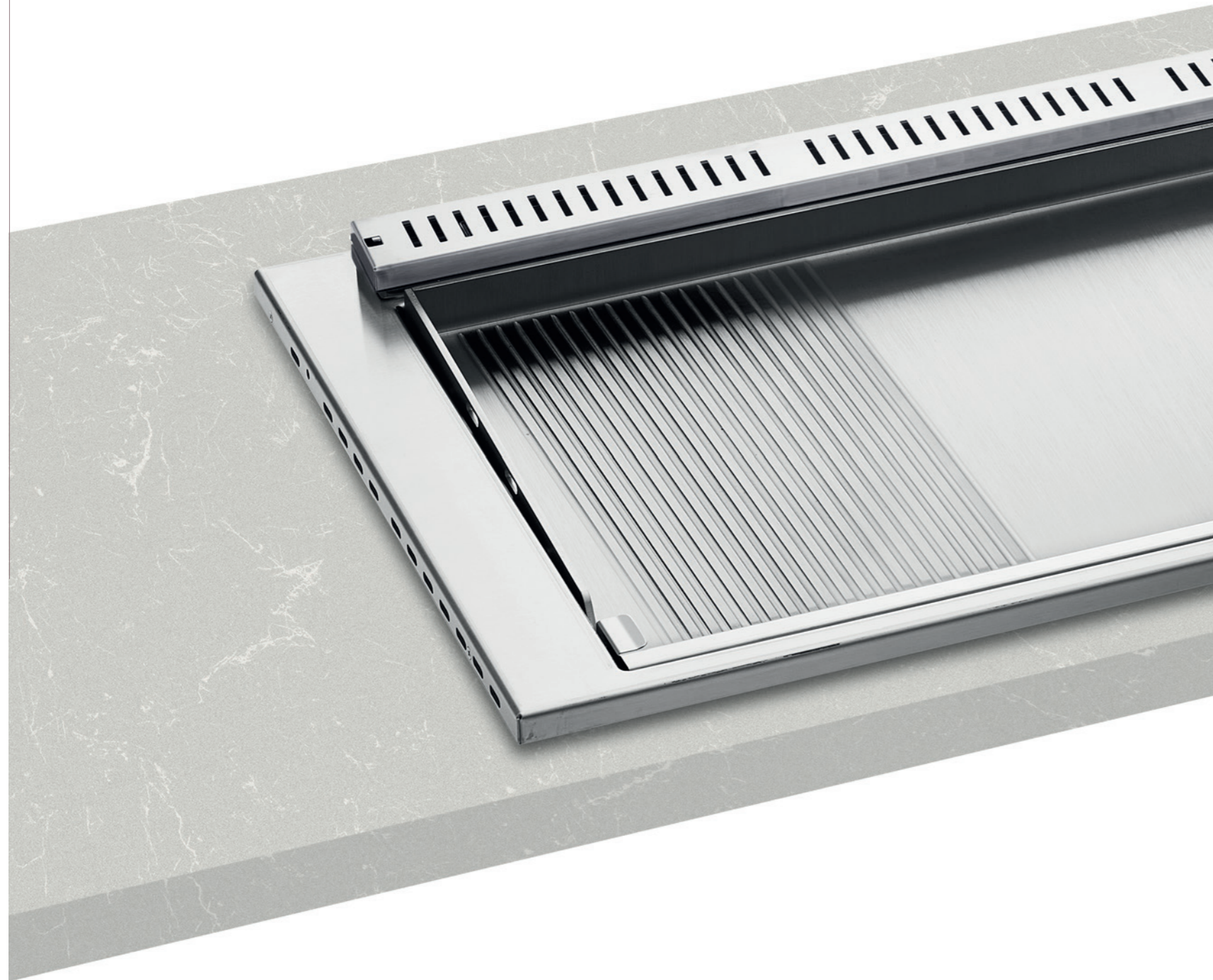
* Coperchio Inox (cod. **0206137**)
Stainless steel lid (code **0206137**)
Couvercle en acier inoxydable (réf. **0206137**)
Edelstahlabdeckung (Artikel-Nr. **0206137**)

		€ (VAT excl.)
0207060	Friggitrice	632,00
0206137	Coperchio Inox	238,00



Piano cottura a **GAS**

Gas Cooktop / Plaque de cuisson **gaz** / Gas Kochplatte



B.IN 80 LR

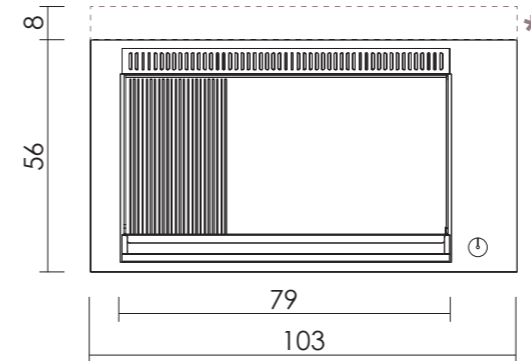
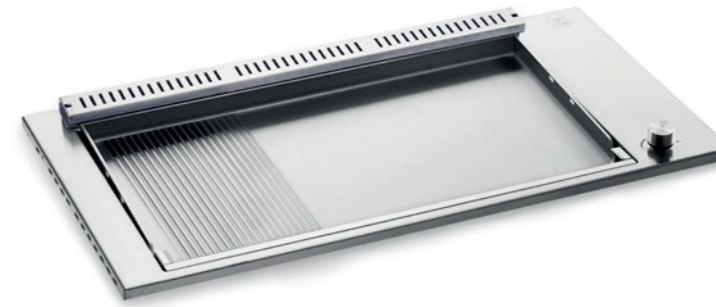
0203105 (+ coperchio opzionale / optional lid *)

Piastra 2/3 liscia, 1/3 rigata, incasso

Built-in cooking plate, 2/3 smooth and 1/3 ribbed

Plaque de cuisson encastrable 2/3 lisse et 1/3 rainuré

Einbaukochplatte, 2/3 glatt und 1/3 gerillt



L 103 x P 56 cm

53 Kg

10-12

* Coperchio Inox (cod. **0206132**) o Nero (cod. **0206132F01**)
Stainless steel lid (code **0206132**) or black lid (code **0206132F01**)
Couvercle en acier inoxydable (réf. **0206132**) ou noir (réf. **0206132F01**)
Edelstahlabdeckung (Artikel-Nr. **0206132**) oder schwarzer Abdeckung (Artikel-Nr. **0206132F01**)

		€ (VAT excl.)
0203105	Piastra	1.934,00
0206132	Coperchio Inox	428,00
0206132F01	Coperchio Nero	593,00

B.IN 80 L

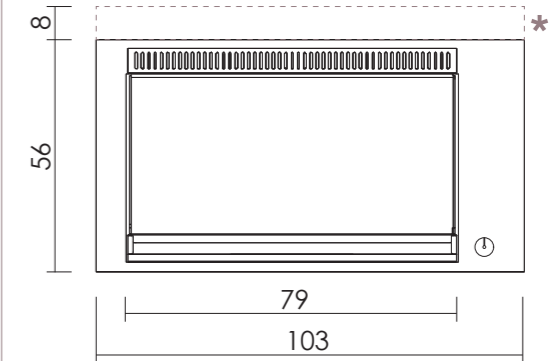
0203104 (+ coperchio opzionale / optional lid *)

Piastra liscia, incasso

Built-in smooth cooking plate

Plaque de cuisson encastrable lisse

Glatte Einbaukochplatte



L 103 x P 56 cm

53 Kg

10-12

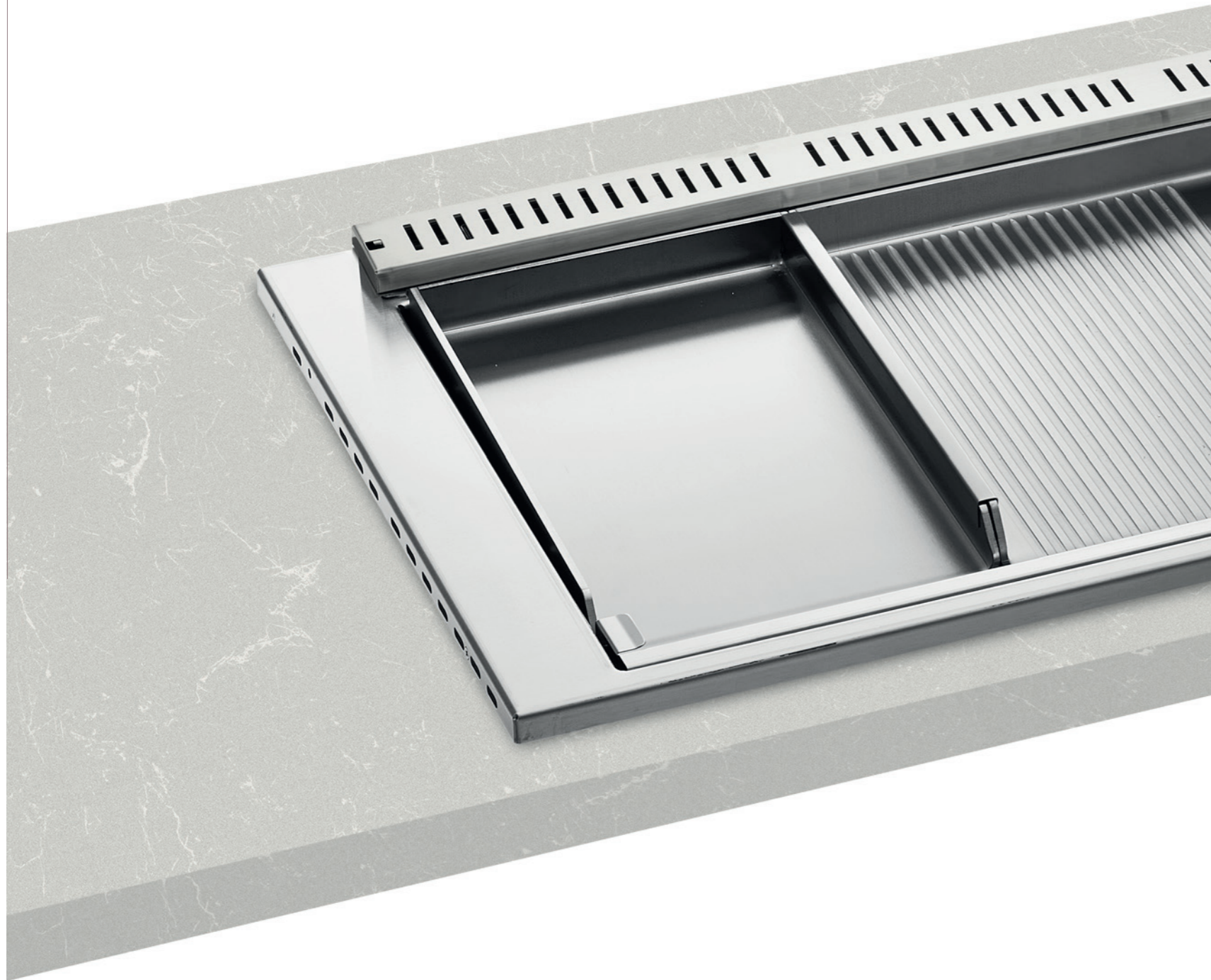
* Coperchio Inox (cod. **0206132**) o Nero (cod. **0206132F01**)
Stainless steel lid (code **0206132**) or black lid (code **0206132F01**)
Couvercle en acier inoxydable (réf. **0206132**) ou noir (réf. **0206132F01**)
Edelstahlabdeckung (Artikel-Nr. **0206132**) oder schwarzer Abdeckung (Artikel-Nr. **0206132F01**)

		€ (VAT excl.)
0203104	Piastra	1.808,00
0206132	Coperchio Inox	428,00
0206132F01	Coperchio Nero	593,00



Piano cottura: **A GAS**

Gas Cooktop / Plaque de cuisson **gaz** / Gas Kochplatte



B.IN 80 MIX LR

0203107 (+ coperchio opzionale / optional lid *)

Piastra con due zone di cottura indipendenti:

26 cm liscia + 53 cm liscia/rigata

Cooking plate with two independent cooking zones:

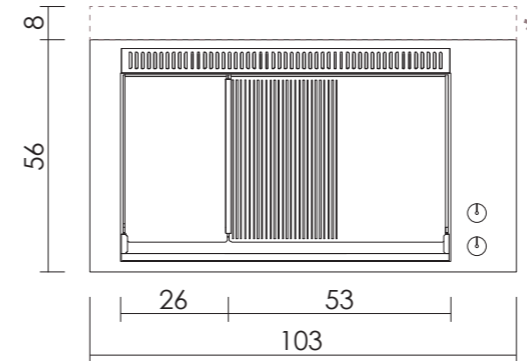
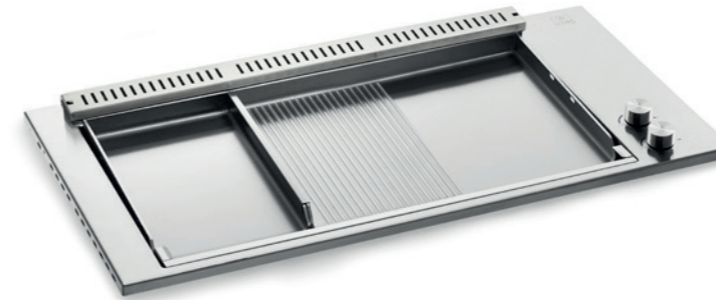
26 cm smooth + 53 cm smooth/ribbed

Plaque de cuisson avec deux zones de cuisson indépendantes:

26 cm lisse + 53 cm lisse/rainuré

Kochplatte mit zwei unabhängigen Kochzonen:

26 cm glatt + 53 cm glatt/gerillt



L 103 x P 56 cm

48 Kg

10-12

* Coperchio Inox (cod. **0206132**) o Nero (cod. **0206132F01**)
Stainless steel lid (code **0206132**) or black lid (code **0206132F01**)
Couvercle en acier inoxydable (réf. **0206132**) ou noir (réf. **0206132F01**)
Edelstahlabdeckung (Artikel-Nr. **0206132**) oder schwarzer Abdeckung (Artikel-Nr. **0206132F01**)

		€ (VAT excl.)
0203107	Piastra	2.087,00
0206132	Coperchio Inox	428,00
0206132F01	Coperchio Nero	593,00

B.IN 80 MIX L

0203106 (+ coperchio opzionale / optional lid *)

Piastra con due zone di cottura indipendenti:

26 cm liscia + 53 cm liscia

Cooking plate with two independent cooking zones:

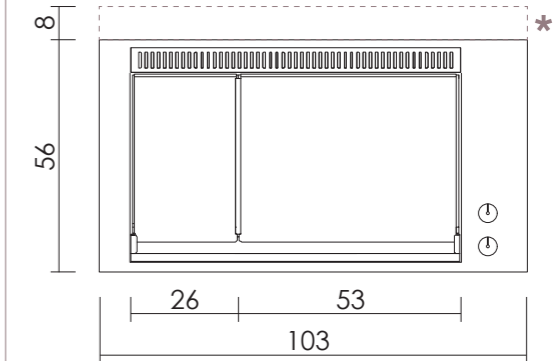
26 cm smooth + 53 cm smooth

Plaque de cuisson avec deux zones de cuisson indépendantes:

26 cm lisse + 53 cm lisse

Kochplatte mit zwei unabhängigen Kochzonen:

26 cm glatt + 53 cm glatt



L 103 x P 56 cm

48 Kg

10-12

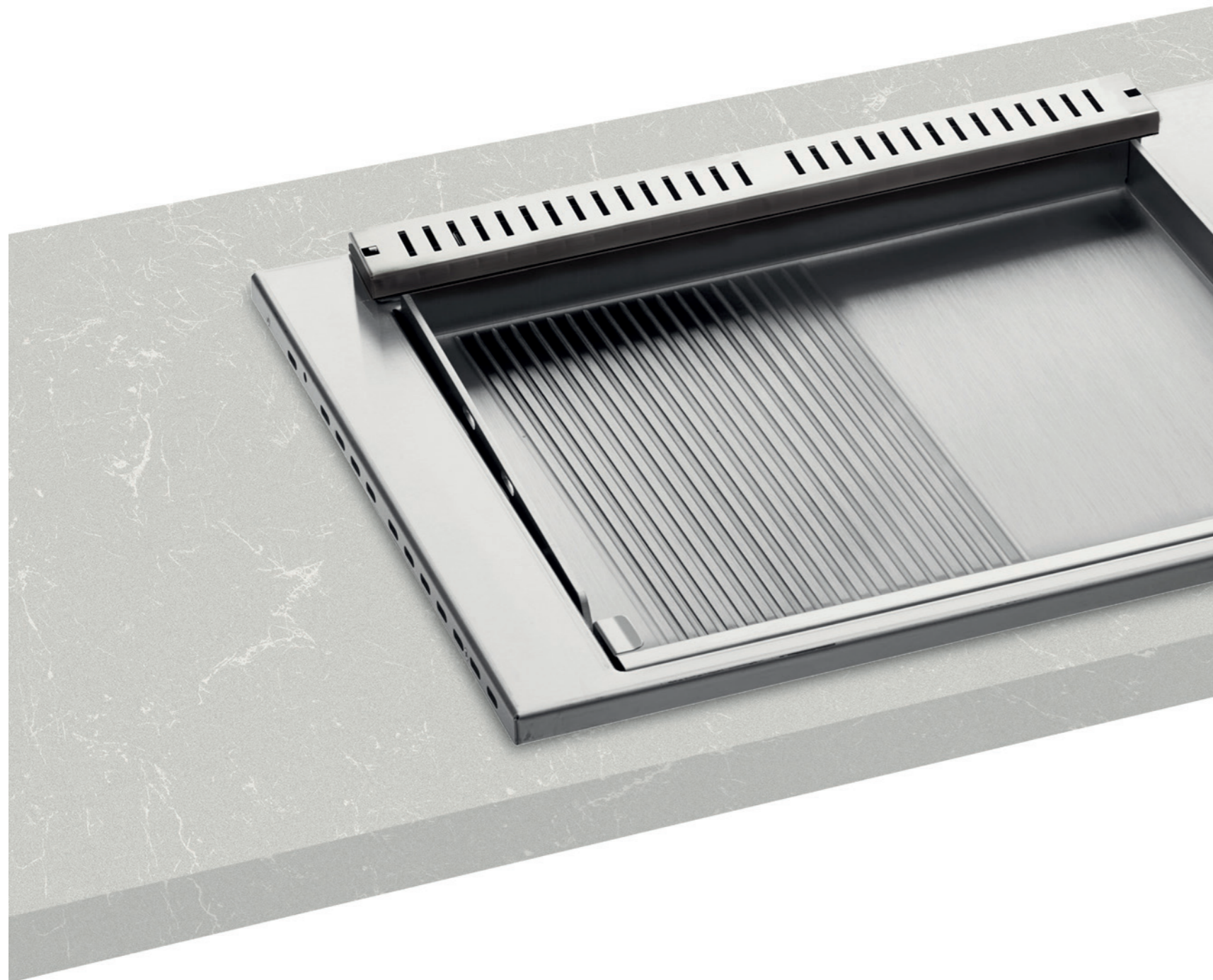
* Coperchio Inox (cod. **0206132**) o Nero (cod. **0206132F01**)
Stainless steel lid (code **0206132**) or black lid (code **0206132F01**)
Couvercle en acier inoxydable (réf. **0206132**) ou noir (réf. **0206132F01**)
Edelstahlabdeckung (Artikel-Nr. **0206132**) oder schwarzer Abdeckung (Artikel-Nr. **0206132F01**)

		€ (VAT excl.)
0203106	Piastra	1.974,00
0206132	Coperchio Inox	428,00
0206132F01	Coperchio Nero	593,00



Piano cottura: **A GAS**

Gas Cooktop / Plaque de cuisson gaz / Gas Kochplatte



B.IN 55 LR

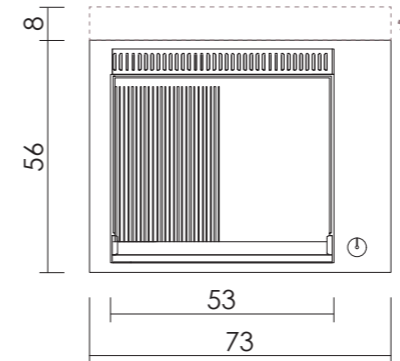
0203103 (+ coperchio opzionale / optional lid *)

Piastra liscia/rigata, incasso

Built-in cooking plate, smooth/ribbed

Plaque de cuisson encastrable lisse/rainuré

Einbaubare Kochplatte, glatt/gerillt



L 73 x P 56 cm

35 Kg

6-8

* Coperchio Inox (cod. **0206134**) o Nero (cod. **0206134F01**)
Stainless steel lid (code **0206134**) or black lid (code **0206134F01**)
Couvercle en acier inoxydable (réf. **0206134**) ou noir (réf. **0206134F01**)
Edelstahlabdeckung (Artikel-Nr. **0206134**) oder schwarzer Abdeckung (Artikel-Nr. **0206134F01**)

		€ (VAT excl.)
0203103	Piastra	1.505,00
0206134	Coperchio Inox	339,00
0206134F01	Coperchio Nero	448,00

B.IN 55 L

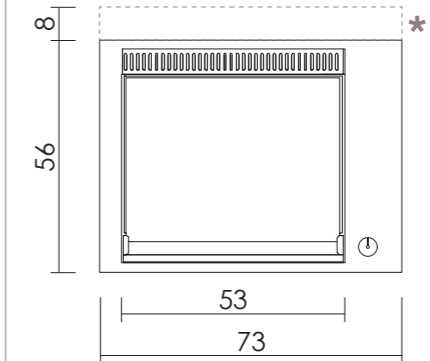
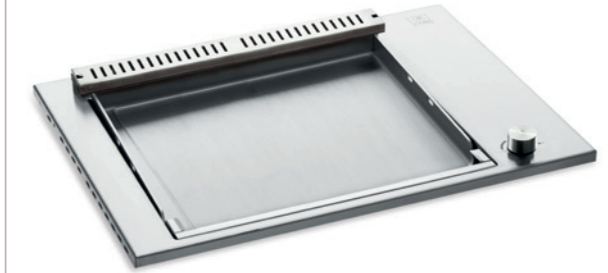
0203102 (+ coperchio opzionale / optional lid *)

Piastra liscia, incasso

Built-in smooth cooking plate

Plaque de cuisson encastrable lisse

Glatte Einbaukochplatte



L 73 x P 56 cm

35 Kg

6-8

* Coperchio Inox (cod. **0206134**) o Nero (cod. **0206134F01**)
Stainless steel lid (code **0206134**) or black lid (code **0206134F01**)
Couvercle en acier inoxydable (réf. **0206134**) ou noir (réf. **0206134F01**)
Edelstahlabdeckung (Artikel-Nr. **0206134**) oder schwarzer Abdeckung (Artikel-Nr. **0206134F01**)

		€ (VAT excl.)
0203102	Piastra	1.394,00
0206134	Coperchio Inox	339,00
0206134F01	Coperchio Nero	448,00



Piano cottura: **A GAS**

Gas Cooktop / Plaque de cuisson **gaz** / Gas Kochplatte



B.IN 80 COMBI LR

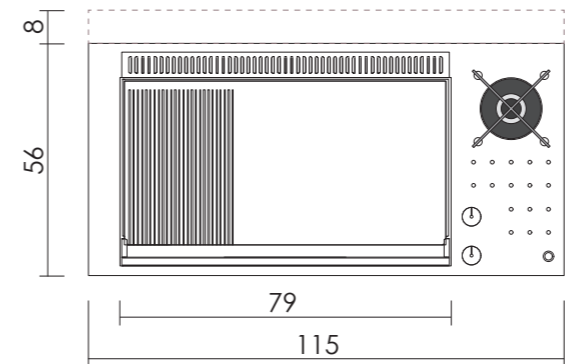
0203111 (+ coperchio opzionale / optional lid *)

Piastra 2/3 liscia, 1/3 rigata + F1 incasso

Built-in cooking plate, 2/3 Smooth, 1/3 Ribbed + F1 burner

Plaque de cuisson encastrable 2/3 lisse, 1/3 rainuré + brûleur F1

Einbaukochplatte, 2/3 glatt, 1/3 gerillt + F1 Brenner



L 115 x P 56 cm

55 Kg

10-12

* Coperchio Inox (cod. **0206131**) o Nero (cod. **0206131F01**)
Stainless steel lid (code **0206131**) or black lid (code **0206131F01**)
Couvercle en acier inoxydable (réf. **0206131**) ou noir (réf. **0206131F01**)
Edelstahlabdeckung (Artikel-Nr. **0206131**) oder schwarzer Abdeckung (Artikel-Nr. **0206131F01**)

		€ (VAT excl.)
0203111	Piastra	2.666,00
0206131	Coperchio Inox	463,00
0206131F01	Coperchio Nero	628,00

B.IN 80 COMBI L

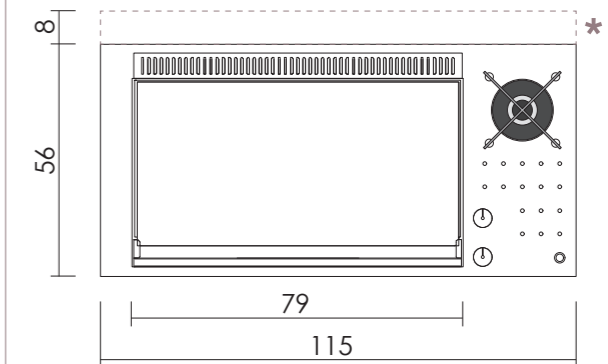
0203110 (+ coperchio opzionale / optional lid *)

Piastra liscia + F1 incasso

Built-in Smooth Plate + F1 burner

Plaque encastrable lisse + brûleur F1

Einbaubare glatte Platte + F1 Brenner



L 115 x P 56 cm

55 Kg

10-12

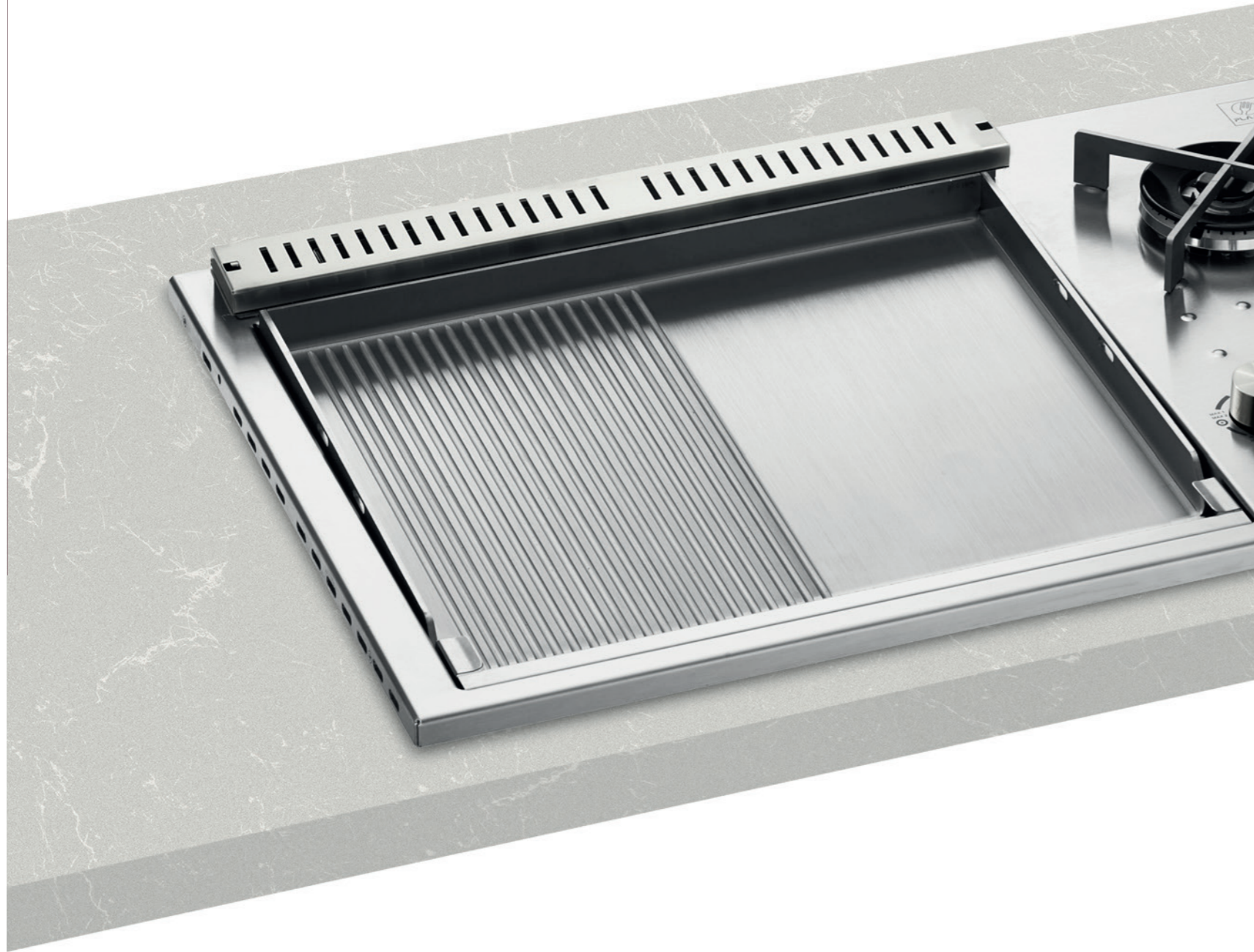
* Coperchio Inox (cod. **0206131**) o Nero (cod. **0206131F01**)
Stainless steel lid (code **0206131**) or black lid (code **0206131F01**)
Couvercle en acier inoxydable (réf. **0206131**) ou noir (réf. **0206131F01**)
Edelstahlabdeckung (Artikel-Nr. **0206131**) oder schwarzer Abdeckung (Artikel-Nr. **0206131F01**)

		€ (VAT excl.)
0203110	Piastra	2.540,00
0206131	Coperchio Inox	463,00
0206131F01	Coperchio Nero	628,00



Piano cottura: **A GAS**

Gas Cooktop / Plaque de cuisson gaz / Gas Kochplatte

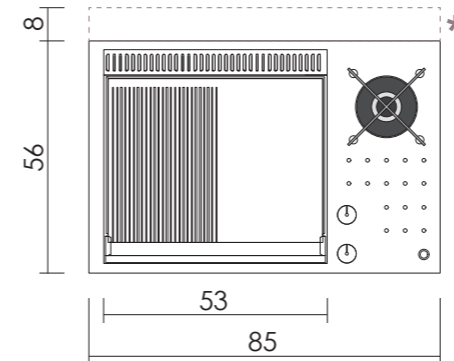
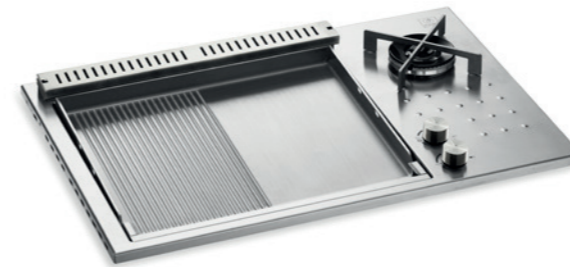


B.IN 55 COMBI LR

0203109 (+ coperchio opzionale / optional lid *)

Piastra liscia/rigata + F1 incasso

Built-in Plate, Smooth/Ribbed + F1 burner
Plaque encastrable lisse/rainuré + brûleur F1
Einbaubare Platte, glatt/gerillt + F1 Brenner



L 85 x P 56 cm

42 Kg

6-8

* Coperchio Inox (cod. **0206133**) o Nero (cod. **0206133F01**)
Stainless steel lid (code **0206133**) or black lid (code **0206133F01**)
Couvercle en acier inoxydable (réf. **0206133**) ou noir (réf. **0206133F01**)
Edelstahlabdeckung (Artikel-Nr. **0206133**) oder schwarzer Abdeckung (Artikel-Nr. **0206133F01**)

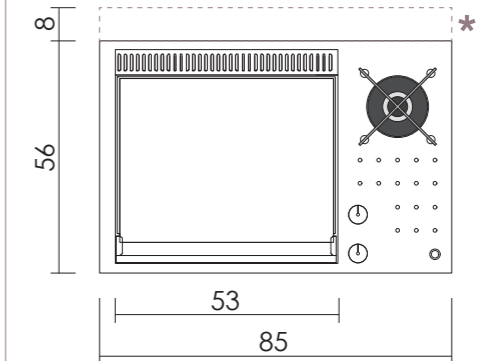
		€ (VAT excl.)
0203109	Piastra	2.238,00
0206133	Coperchio Inox	374,00
0206133F01	Coperchio Nero	539,00

B.IN 55 COMBI L

0203108 (+ coperchio opzionale / optional lid *)

Piastra liscia + F1 incasso

Built-in Smooth Plate + F1 burner
Plaque encastrable lisse + brûleur F1
Einbaubare glatte Platte + F1 Brenner



L 85 x P 56 cm

42 Kg

6-8

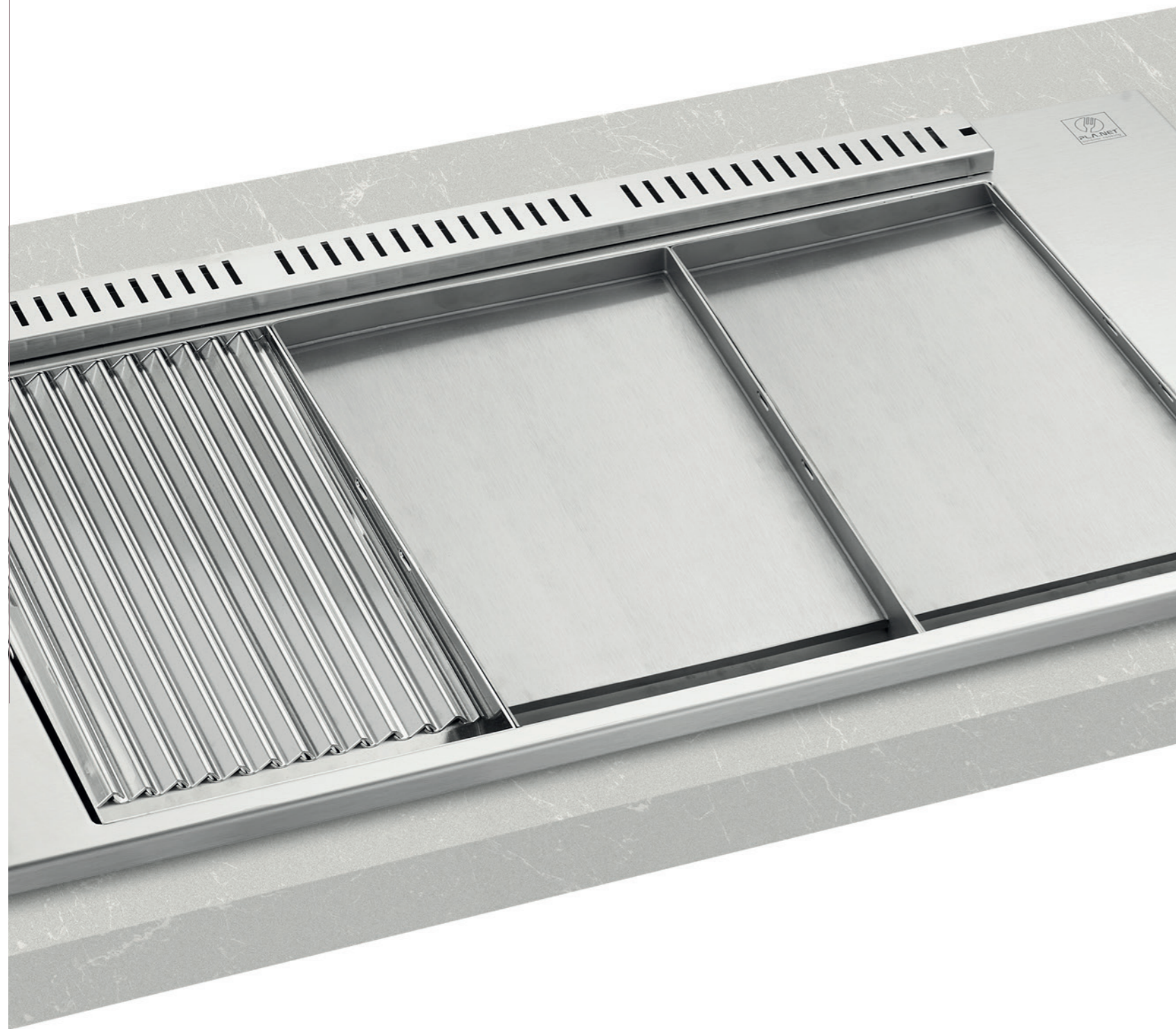
* Coperchio Inox (cod. **0206133**) o Nero (cod. **0206133F01**)
Stainless steel lid (code **0206133**) or black lid (code **0206133F01**)
Couvercle en acier inoxydable (réf. **0206133**) ou noir (réf. **0206133F01**)
Edelstahlabdeckung (Artikel-Nr. **0206133**) oder schwarzer Abdeckung (Artikel-Nr. **0206133F01**)

		€ (VAT excl.)
0203108	Piastra	2.127,00
0206133	Coperchio Inox	374,00
0206133F01	Coperchio Nero	539,00



Piano cottura: **A GAS**

Gas Cooktop / Plaque de cuisson **gaz** / Gas Kochplatte



B.IN 80MIX.GRILL L

0203117 (+ coperchio opzionale / optional lid *)

Piastra con due zone di cottura indipendenti:

26 cm lamelle ondulate + 53 cm liscia

Plate with two independent cooking zones:

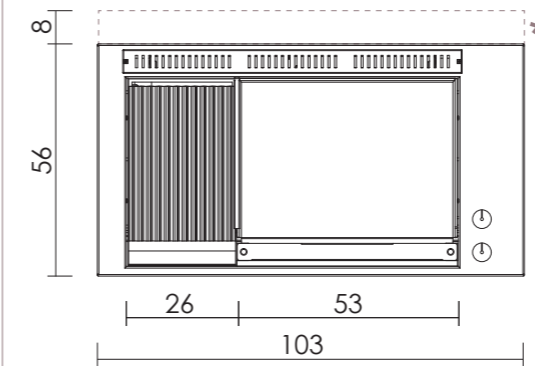
26 cm wavy grids + 53 cm smooth

Plaque avec deux zones de cuisson indépendantes:

26 cm à rainures ondulées + 53 cm lisse

Platte mit zwei unabhängigen Kochzonen:

26 cm wellenförmig gerillt + 53 cm glatt



L 103 x P 56 cm

45 Kg

10-12

* Coperchio Inox (cod. **0206132**) o Nero (cod. **0206132F01**)
Stainless steel lid (code **0206132**) or black lid (code **0206132F01**)
Couvercle en acier inoxydable (réf. **0206132**) ou noir (réf. **0206132F01**)
Edelstahlabdeckung (Artikel-Nr. **0206132**) oder schwarzer Abdeckung (Artikel-Nr. **0206132F01**)

		€ (VAT excl.)
0203117	Piastra	3.380,00
0206132	Coperchio Inox	428,00
0206132F01	Coperchio Nero	593,00

B.IN 80 GRILL R/LL

0203114 (+ coperchio opzionale / optional lid *)

Piastra con due zone di cottura indipendenti:

26 cm a lamelle ondulate + 26 cm (x2) piastra liscia

Plate with two independent cooking zones:

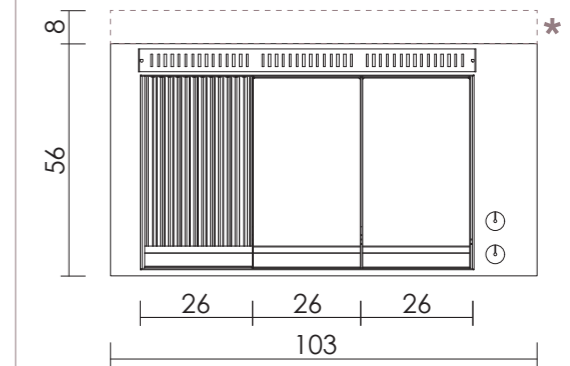
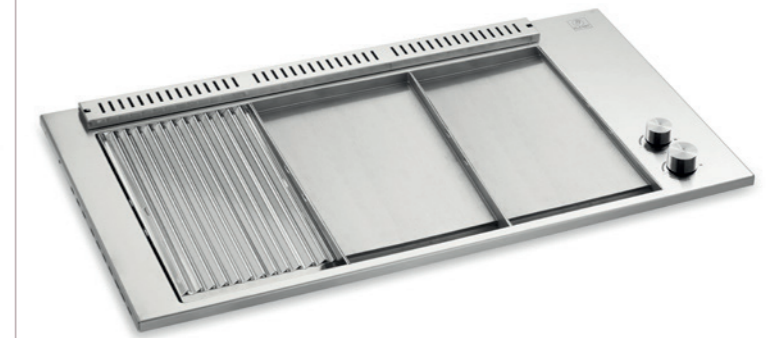
26 cm wavy grids + 26 cm (x2) smooth

Plaque avec deux zones de cuisson indépendantes:

26 cm à rainures ondulées + 26 cm (x2) lisse

Platte mit zwei unabhängigen Kochzonen:

26 cm wellenförmig gerillt + 26 cm (x2) glatt



L 103 x P 56 cm

45 Kg

10-12

* Coperchio Inox (cod. **0206132**) o Nero (cod. **0206132F01**)
Stainless steel lid (code **0206132**) or black lid (code **0206132F01**)
Couvercle en acier inoxydable (réf. **0206132**) ou noir (réf. **0206132F01**)
Edelstahlabdeckung (Artikel-Nr. **0206132**) oder schwarzer Abdeckung (Artikel-Nr. **0206132F01**)

		€ (VAT excl.)
0203114	Piastra	3.196,00
0206132	Coperchio Inox	428,00
0206132F01	Coperchio Nero	593,00

🔥 Piano cottura: **A GAS**

Gas Cooktop / Plaque de cuisson **gaz** / Gas Kochplatte

B.IN F1

0207058

(+ coperchio opzionale / optional lid *)

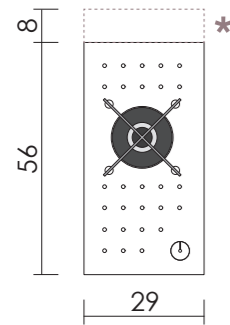
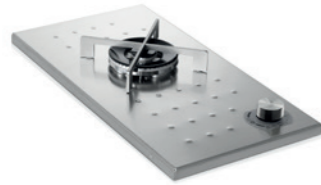
Gas doppia corona 4 kW, incasso

Built-in Double Ring Gas Burner, 4 kW

Brûleur à double couronne 4 kW

Encastrable

Einbau-Gasbrenner Doppelring, 4 kW



L 29 x P 56 cm

9 Kg

* Coperchio Inox (cod. **0206137**)
Stainless steel lid (code **0206137**)
Couvercle en acier inoxydable (réf. **0206137**)
Edelstahlabdeckung (Artikel-Nr. **0206137**)

		€ (VAT excl.)
0207058	Fornello	531,00
0206137	Coperchio Inox	238,00

B.IN F2

0207059

(+ coperchio opzionale / optional lid *)

N.1 gas doppia corona 4 kW

+ n.1 gas 1,75 kW, incasso

N.1 Double Ring Gas Burner 4 kW

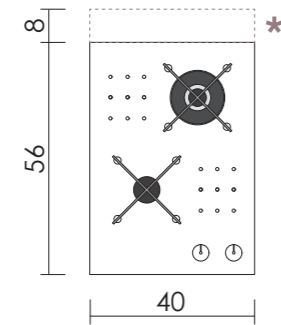
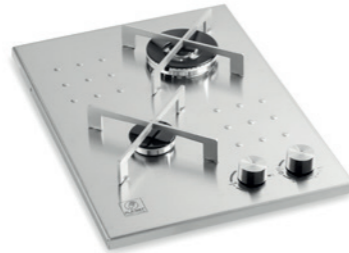
+ N.1 Gas Burner 1,75 kW Built-in

N.1 brûleur à double couronne 4 kW

+ N.1 brûleur 1,75 kW Encastrable

N.1 Gasbrenner Doppelring 4 kW

+ 1 Gasbrenner 1,75 kW, zum Einbau



L 40 x P 56 cm

10 Kg

* Coperchio Inox (cod. **0206136**)
o Nero (cod. **0206136F01**)
Stainless steel lid (code **0206136**)
or black lid (code **0206136F01**)
Couvercle en acier inoxydable (réf. **0206136**)
ou noir (réf. **0206136F01**)
Edelstahlabdeckung (Artikel-Nr. **0206136**) oder
schwarzer Abdeckung (Artikel-Nr. **0206136F01**)

		€ (VAT excl.)
0207059	Fornello	927,00
0206136	Coperchio Inox	261,00
0206136F01	Coperchio Nero	372,00

B.IN F3

0207057

(+ coperchio opzionale / optional lid *)

N.1 gas doppia corona 4 kW

+ n.2 gas 1,75 kW, incasso

N.1 Double Ring Gas Burner 4 kW

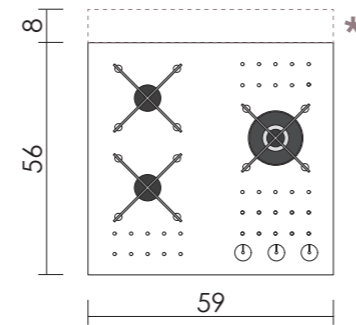
+ 2 Gas Burners 1.75 kW, Built-in

N.1 brûleur à double couronne 4 kW

+ N.2 brûleurs 1,75 kW Encastrable

N.1 Gasbrenner Doppelring 4 kW

+ 2 Gasbrenner 1,75 kW, Einbau



L 59 x P 56 cm

13 Kg

* Coperchio Inox (cod. **0206135**)
Stainless steel lid (code **0206135**)
Couvercle en acier inoxydable (réf. **0206135**)
Edelstahlabdeckung (Artikel-Nr. **0206135**)

		€ (VAT excl.)
0207057	Fornello	1.110,00
0206135	Coperchio Inox	273,00

IN.COP

Coperchio incernierato di protezione in Acciaio AISI 304

Hinged Protective lid in AISI 304 Stainless Steel

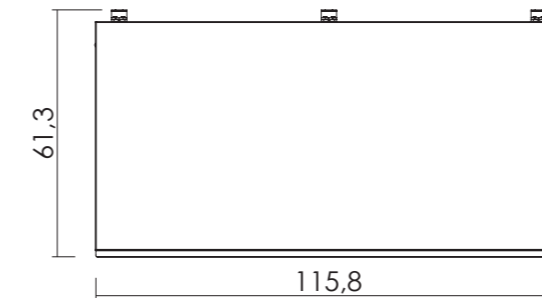
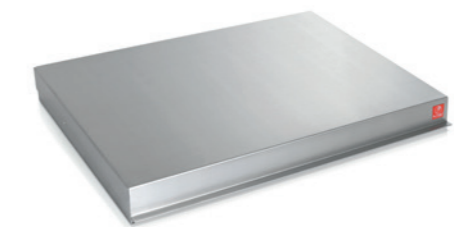
Couvercle de protection en acier inoxydable AISI 304

Aufklappbarer Schutzdeckel aus Edelstahl AISI 304

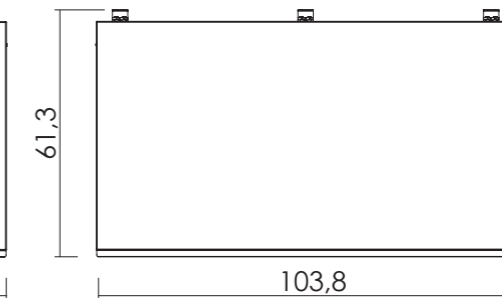
Nero



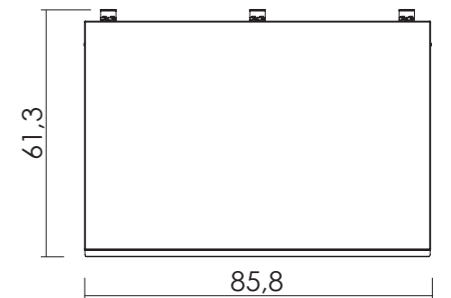
Inox



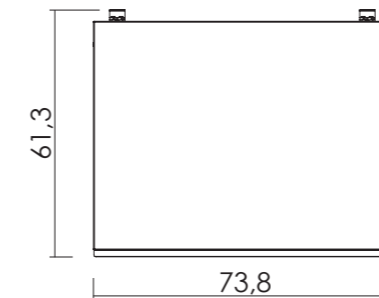
Inox (cod. **0206131**)
Nero (cod. **0206131F01**) Black / Noir / Schwarzer



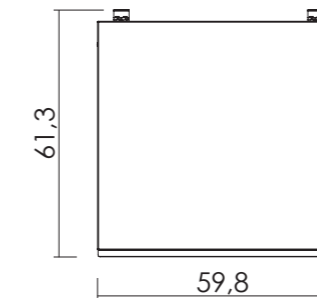
Inox (cod. **0206132**)
Nero (cod. **0206132F01**) Black / Noir / Schwarzer



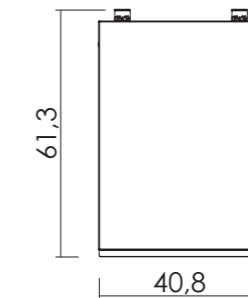
Inox (cod. **0206133**)
Nero (cod. **0206133F01**) Black / Noir / Schwarzer



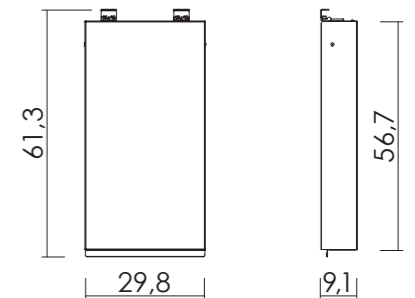
Inox (cod. **0206134**)
Nero (cod. **0206134F01**)
Black / Noir / Schwarzer



Inox (cod. **0206135**)



Inox (cod. **0206136**)
Nero (cod. **0206136F01**)
Black / Noir / Schwarzer



Inox (cod. **0206137**)

			€ (VAT excl.)			€ (VAT excl.)
0206137		IN.COP 290	238,00	0206137F01	IN.COP 290 PB	347,00
0206136		IN.COP 400	261,00	0206136F01	IN.COP 400 PB	372,00
0206135		IN.COP 590	273,00	0206135F01	IN.COP 590 PB	383,00
0206134	Inox	IN.COP 730	339,00	0206134F01	IN.COP 730 PB	448,00
0206133		IN.COP 850	374,00	0206133F01	IN.COP 850 PB	539,00
0206132		IN.COP 1030	428,00	0206132F01	IN.COP 1030 PB	593,00
0206131		IN.COP 1150	463,00	0206131F01	IN.COP 1150 PB	628,00

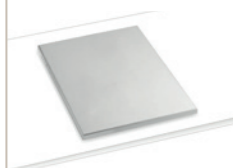
PIANO CUCINA: TOP COMPONENTE

KITCHEN COOKTOP: MODULAR WORKTOP | PLAN DE CUISINE: PLAN MODULAIRE | KÜCHENARBEITSPLATTE: MODULARES ARBEITSPLATTE

L 115 cm		L 103 cm		L 85 cm		L 73 cm		L 59 cm		L 40 cm		L 29 cm	
Piastra cottura Cooking plate / Plaque de cuisson / Kochplatte		Piastra cottura Cooking plate / Plaque de cuisson / Kochplatte		Piastra cottura Cooking plate / Plaque de cuisson / Kochplatte		Piastra cottura Cooking plate / Plaque de cuisson / Kochplatte		Fornello a gas Gas stove / Réchaud à gaz / Gasherd		Fornello a gas Gas stove / Réchaud à gaz / Gasherd		Fornello a gas Gas stove / Réchaud à gaz / Gasherd	
	€ (VAT excl.)		€ (VAT excl.)		€ (VAT excl.)		€ (VAT excl.)		€ (VAT excl.)		€ (VAT excl.)		€ (VAT excl.)
B.IN 80 COMBI.L	2.540,00	B.IN 80 L	1.808,00	B.IN 80 MIX.LR	2.087,00	B.IN 55 COMBI.L	2.127,00	B.IN F3	1.110,00	B.IN F2	927,00	B.IN F1	531,00
	€ (VAT excl.)		€ (VAT excl.)		€ (VAT excl.)		€ (VAT excl.)	Piano a induzione Induction hob / Plaque à induction / Induktionskochfeld			€ (VAT excl.)	Friggitrice Fryer / Friteuse / Fritteuse	
B.IN 80 COMBI.LR	2.666,00	B.IN 80 LR	1.934,00	B.IN 80 GRILL.R/LL	3.196,00	B.IN 55 COMBI.LR	2.238,00			B.IN 55 LR	1.505,00		
	€ (VAT excl.)		€ (VAT excl.)		€ (VAT excl.)		€ (VAT excl.)	Lavello Sink / Évier / Spüle			€ (VAT excl.)	Rubinetto miscelatore abbattibile Retractable Mixer Tap Robinet Mélangeur pliable faltbarer Spülbecken-Mischbatterie	
B.IN EL 80.L	2.420,00	B.IN 80 MIX.L	1.974,00	B.IN 80 MIX GRILL.L	3.380,00	B.IN EL 55.L	1.793,00			B.IN LAV4056	577,00		

SU MISURA CUSTOM-MADE

Piano di compensazione
Custom-sized worktop / Plan de travail sur mesure / Maß-Passplatte



Larghezza personalizzabile
Customizable width / Largeur personnalisable / Anpassbare Breite

ACCESSORI BUILT-IN

ACCESSORIES FOR BUILT-IN MODULES | ACCESSOIRES POUR MODULES ENCASTRABLES | ZUBEHÖR FÜR EINBAUMODULE



B.IN LAV 4056

Lavello da incasso 40 x 56 cm
Built-in 40 x 56 cm sink
Évier encastrable 40 x 56 cm
Einbauspüle 40 x 56 cm

	€ (VAT excl.)
0260009	577,00

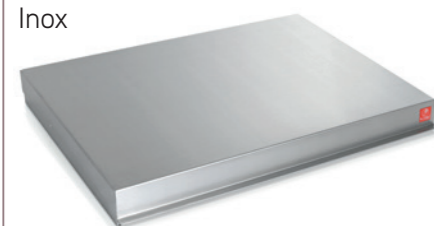


SOTTO

Rubinetto miscelatore abbattibile
Foldable mixer tap
Mitigeur rabattable
Klappbarer Einhebelmischer

	€ (VAT excl.)
0209007	392,00

Inox



Nero



Coperchio incernierato di protezione in Acciaio AISI 304
Hinged Protective lid in AISI 304 Stainless Steel
Couvercle de protection articulé en acier inoxydable AISI 304
Aufklappbarer Schutzdeckel aus Edelstahl AISI 304

IN.COP 1150

(80 COMBI / 80 EL)

		€ (VAT excl.)
0206131	Inox	463,00
0206131F01	Nero	628,00

IN.COP 1030

(80 / 80 MIX / 80 GRILL)

		€ (VAT excl.)
0206132	Inox	428,00
0206132F01	Nero	593,00

IN.COP 850

(55 COMBI / 55 EL)

		€ (VAT excl.)
0206133	Inox	374,00
0206133F01	Nero	539,00

IN.COP 730

(55)

		€ (VAT excl.)
0206134	Inox	339,00
0206134F01	Nero	448,00

IN.COP 590

(F3)

		€ (VAT excl.)
0206135	Inox	273,00

IN.COP 400

(F2 / LAV 4056 / INDU)

		€ (VAT excl.)
0206136	Inox	261,00
0206136F01	Nero	372,00

IN.COP 290

(F1 / FR)

		€ (VAT excl.)
0206137	Inox	238,00

ACCESSORI UNIVERSALI

UNIVERSAL ACCESSORIES | ACCESSOIRES UNIVERSELS | UNIVERSALZUBEHÖR



PAR.80

Paraspruzzi per piastre da 80 cm
Splashguard for 80 cm placha

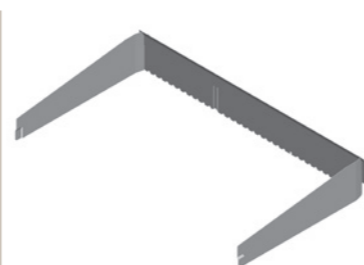
€
(VAT excl.)
0206069 93,00



PAR.80MIX

Paraspruzzi per piastre 80 MIX
Splashguard for 80 MIX placha

€
(VAT excl.)
0206102 96,00



PAR 80 GRILL

Paraspruzzi per piastre 80 GRILL
Splashguard for 80 GRILL placha

€
(VAT excl.)
0206109 102,00



A.PAL

Paletta per cottura
Spatula for cooking

€
(VAT excl.)
0206013 53,00



A.PIN

Pinza per cottura
Pin for cooking

€
(VAT excl.)
0206014 51,00



A.COL

Coltello per cottura
Knife for cooking

€
(VAT excl.)
0206016 51,00



PAR.55

Paraspruzzi per piastre da 55 cm
Splashguard for 55 cm placha

€
(VAT excl.)
0206057 79,00



CLOCHE 52

Cupola inox da 52 cm
52 cm cloche

€
(VAT excl.)
0209020 252,00



CLOCHE 25

Cupola inox da 25 cm
25 cm cloche

€
(VAT excl.)
0209019 180,00



A.FOR

Forchettone per cottura
Fork for cooking

€
(VAT excl.)
0206017 51,00



KIT.4.ACC

Kit 4 accessori per cottura
4-piece cooking accessories set

€
(VAT excl.)
0206015 173,00



GREMBIULE

Grembiule unisex in tessuto
Unisex fabric apron

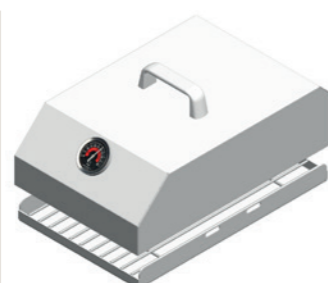
0240012



GRILL RIBS 25

Contenitore e griglia Inox
Stainless steel tray and grill rack

€
(VAT excl.)
0209021 164,00



KIT GRILL RIBS 25

Contenitore e griglia Inox + cloche
Stainless steel tray and grill rack + cloche

€
(VAT excl.)
0209023 344,00



B.IN FR

Friggitrice elettrica 4 lt
4 L electric fryer

€
(VAT excl.)
0207060 632,00



KIT GPL.IT

Kit collegamento gas (regolatore pressione, fascette e tubo, pipetta portagomma)
Gas connection kit (pressure regulator, clamps and hose, hose nozzle)

€
(VAT excl.)
0206124 12,00



KIT SIFONE

Kit sifone B.INLAV
Siphon kit for sink B.INLAV

€
(VAT excl.)
0209018 10,00



GL.Y.IT

Kit raccordo (gpl)
Connection kit (LPG)

€
(VAT excl.)
0206093 0,00

ACCESSORI UNIVERSALI

UNIVERSAL ACCESSORIES | ACCESSOIRES UNIVERSELS | UNIVERSALZUBEHÖR



CONF.LL

Lame per raschietto
Blades for Scraper

€
(VAT excl.)

0214002

15,00



SCRAPER

Raschietto
Scraper

€
(VAT excl.)

0214003

24,00



CONF.P.ABR

Panni abrasivi
Abrasive Cloths

€
(VAT excl.)

0214008

14,00



CLEAN.INOX500

Pulitore inox (6 pz)
Stainless Steel cleaner (pack of 6 units)

€
(VAT excl.)

0214011

99,00



DEGREASER 400

Pulitore piastre (6 pz da 400 ml)
Cooking plate degreaser (pack of 6 units, 400ml each)

€
(VAT excl.)

0214016

99,00



C.P.MAXI

Kit pulizia maxi
Cleaning kit maxi

€
(VAT excl.)

0214006

93,00



C.P.EASY

Kit pulizia easy
Cleaning kit easy

€
(VAT excl.)

0206107

54,00

installazione

INSTALLATION

Basta predisporre un **foro** sul piano d'appoggio e inserirci il piano cottura, che può essere fissato al piano utilizzando le apposite **staffe a "L" regolabili** (su richiesta).

Collegare quindi l'entrata del gas alla bombola se predisposto per GPL (butano/propano) o alla rete se predisposto a metano.

Per il buon funzionamento della piastra di cottura e per la vostra sicurezza, è indispensabile seguire, durante le manutenzioni, le **avvertenze** disponibili nel manuale istruzioni.

Straightforward Installation: simply prepare a **cut-out** in the worktop and insert the built-in module. Secure the unit to the countertop using the designated **L-shaped adjustable brackets** (available upon request). Next, connect the gas inlet to the gas cylinder if set for LPG (butane/propane), or to the mains supply if set for natural gas (methane). To ensure proper operation, maintenance, and safety, it is essential to follow the specific **safety instructions** provided in the instruction manual.

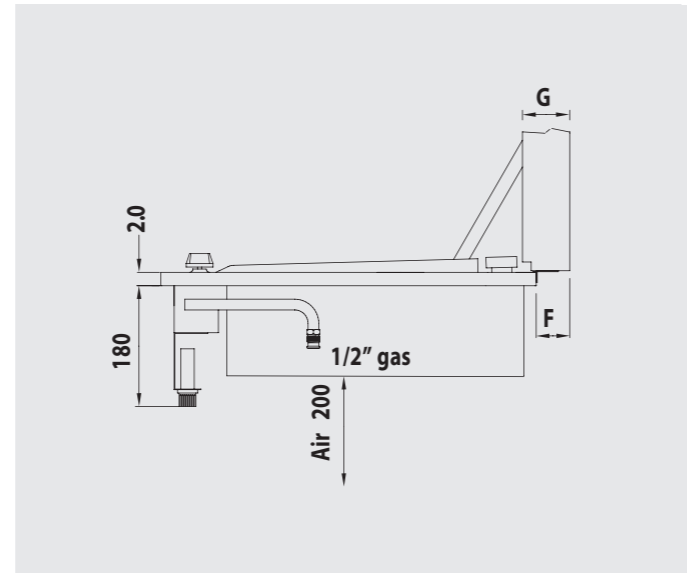
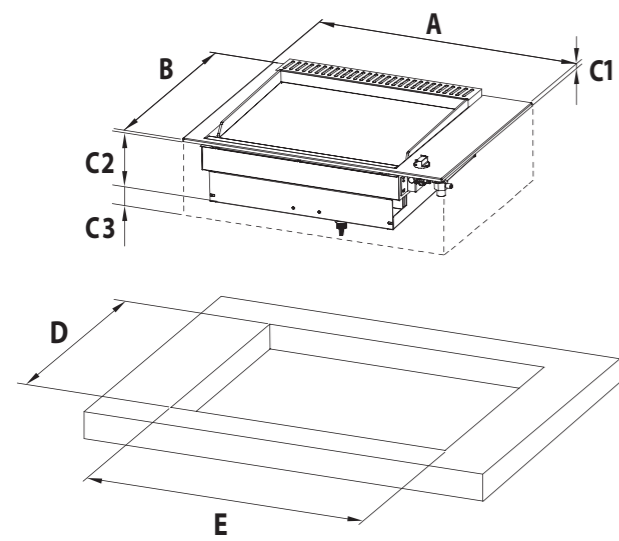
Installation simple: il suffit de réaliser une **découpe** dans le plan de travail et d'y insérer le module encastrable. Fixez l'appareil au plan de travail à l'aide des **pattes de fixation réglables en L** (disponibles sur demande). Ensuite, raccordez l'arrivée du gaz à la bouteille si l'appareil est configuré pour le GPL (butane/propane), ou au réseau de gaz s'il est configuré pour le gaz naturel (méthane). Pour garantir le bon fonctionnement, la sécurité et l'entretien de votre appareil, il est indispensable de respecter les **consignes de sécurité spécifiques** figurant dans le manuel d'instructions.

Einfache Installation: bereiten Sie einfach einen **Ausschnitt** in der Arbeitsplatte vor und setzen Sie das Einbaumodul ein. Die Befestigung erfolgt über die **verstellbaren L-Winkel** (auf Anfrage erhältlich). Schließen Sie anschließend den Gaszulauf an die Gasflasche an, wenn das Gerät für Flüssiggas (Butan/Propan) konfiguriert ist, oder an die Erdgasleitung, falls es für Erdgas vorgesehen ist. Um den einwandfreien Betrieb, die Wartung und Ihre Sicherheit zu gewährleisten, beachten Sie bitte unbedingt die **Sicherheitshinweise** in der Bedienungsanleitung.

INSTALLAZIONE

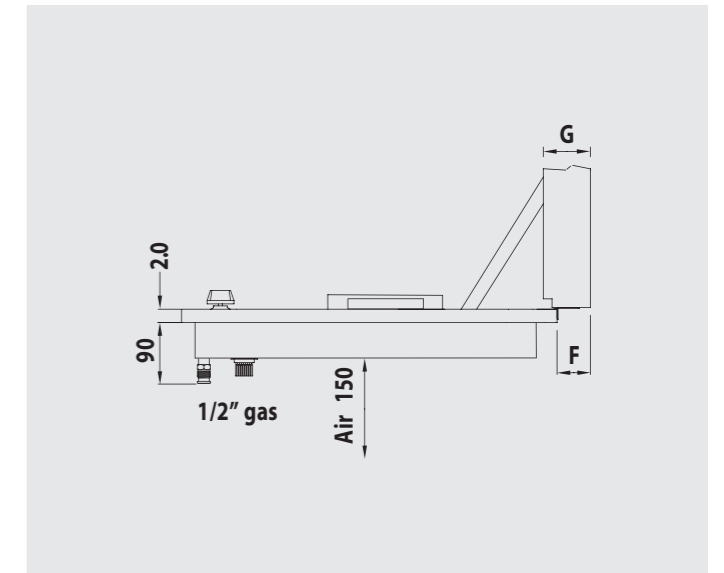
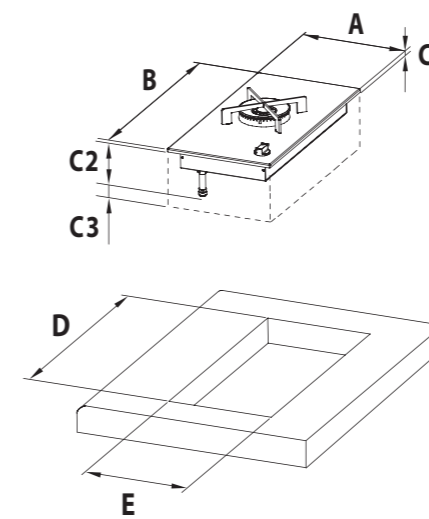
INSTALLATION | INSTALLATION | MONTAGE

DISEGNO TECNICO 1



Art.	mm		Ingombro incasso Built-in dimensions	Altezza piano incasso Built-in profile height	Altezza vano tecnico Technical clearance	Altezza vano ventilazione Airflow clearance	Altezza vano ventilazione Airflow clearance	Foro installazione Installation cut-out		Altezza coperchio Lid height	
	A	B						C1	C2	C3	C2+C3
IN.55	730	560	20	180	200	380	530	700	80	90	
IN.80	1030	560	20	180	200	380	530	1000	80	90	
IN.80MIX	1030	560	20	180	200	380	530	1000	80	90	
IN.55COMBI	850	560	20	180	200	380	530	820	80	90	
IN.80COMBI	1150	560	20	180	200	380	530	1120	80	90	
IN.80GRILL	1030	560	20	180	200	380	530	1000	80	90	

DISEGNO TECNICO 2

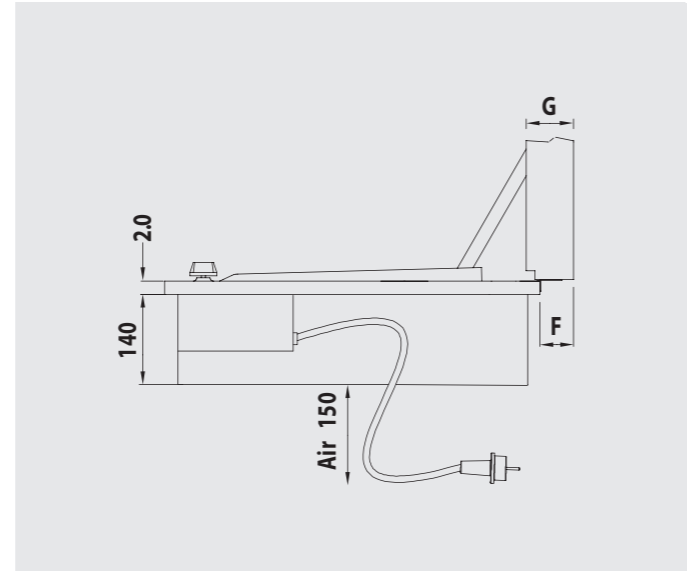
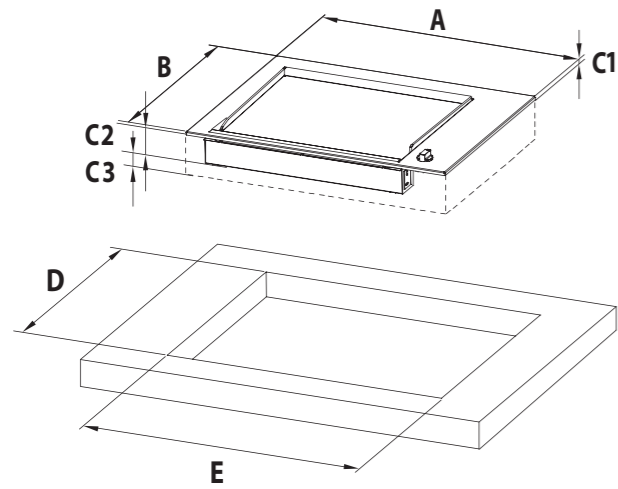


Art.	mm		Ingombro incasso Built-in dimensions	Altezza piano incasso Built-in profile height	Altezza vano tecnico Technical clearance	Altezza vano ventilazione Airflow clearance	Altezza vano ventilazione Airflow clearance	Foro installazione Installation cut-out		Altezza coperchio Lid height	
	A	B						C1	C2	C3	C2+C3
IN.F.1	290	560	20	90	150	240	530	260	80	90	
IN.F.2	400	560	20	90	150	240	530	370	80	90	
IN.F.3	590	560	20	90	150	240	530	560	80	90	

INSTALLAZIONE

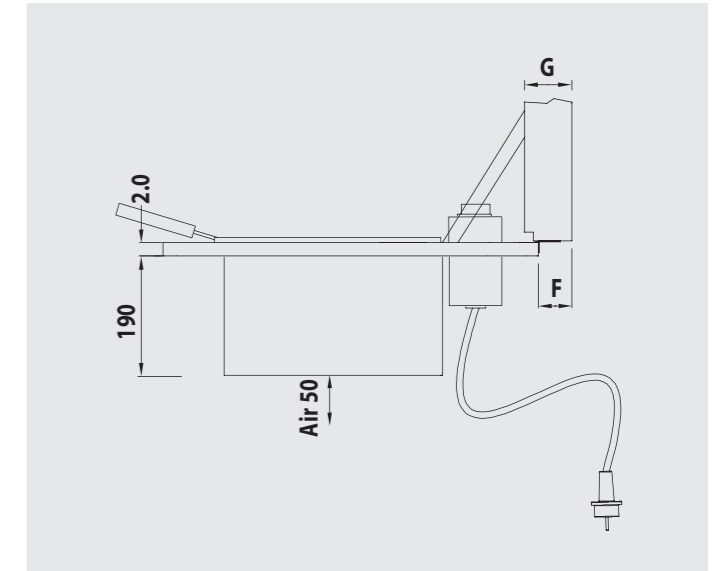
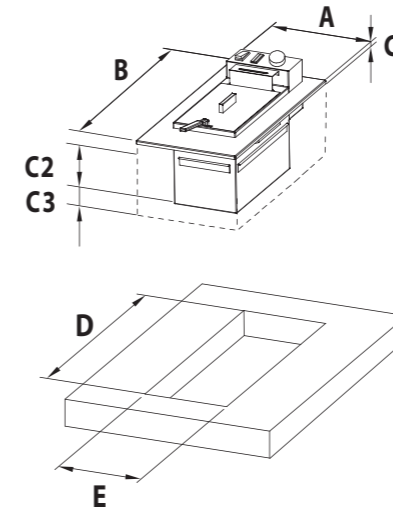
INSTALLATION | INSTALLATION | MONTAGE

DISEGNO TECNICO 3



Art.	mm		Ingombro incasso Built-in dimensions	Altezza piano incasso Built-in profile height	Altezza vano tecnico Technical clearance	Altezza vano ventilazione Airflow clearance	Altezza vano ventilazione Airflow clearance	Foro installazione Installation cut-out		Altezza coperchio Lid height	
	A	B	C1	C2	C3	C2+C3	D	E	F	G	
IN.EL.55	850	560	20	140	150	290	530	820	80	90	
IN.EL.80	1150	560	20	140	150	290	530	1120	80	90	

DISEGNO TECNICO 4

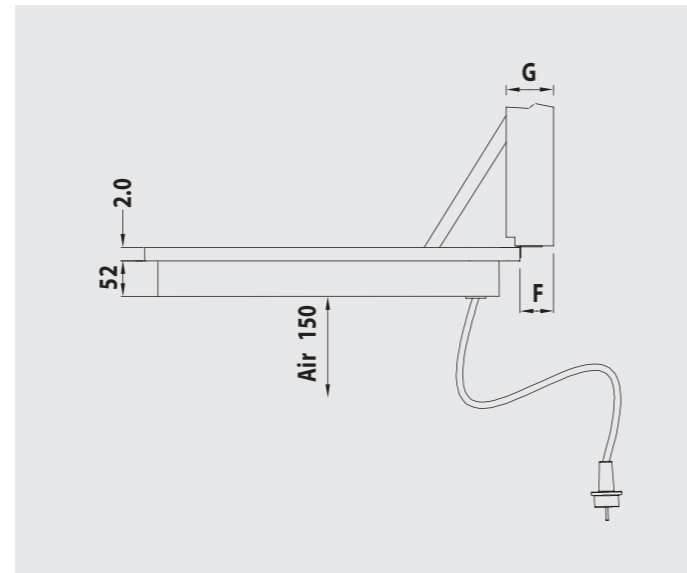
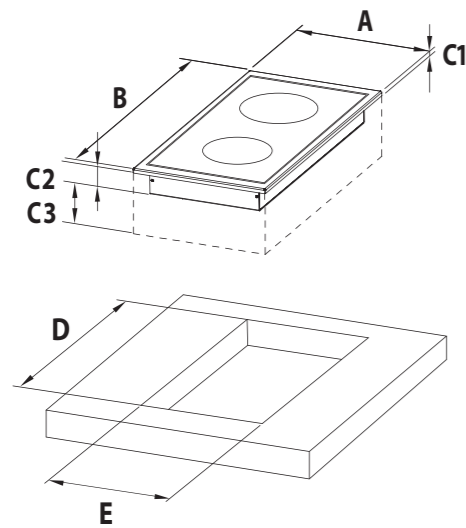


Art.	mm		Ingombro incasso Built-in dimensions	Altezza piano incasso Built-in profile height	Altezza vano tecnico Technical clearance	Altezza vano ventilazione Airflow clearance	Altezza vano ventilazione Airflow clearance	Foro installazione Installation cut-out		Altezza coperchio Lid height	
	A	B	C1	C2	C3	C2+C3	D	E	F	G	
IN.FR	290	560	20	190	50	240	530	260	80	90	

INSTALLAZIONE

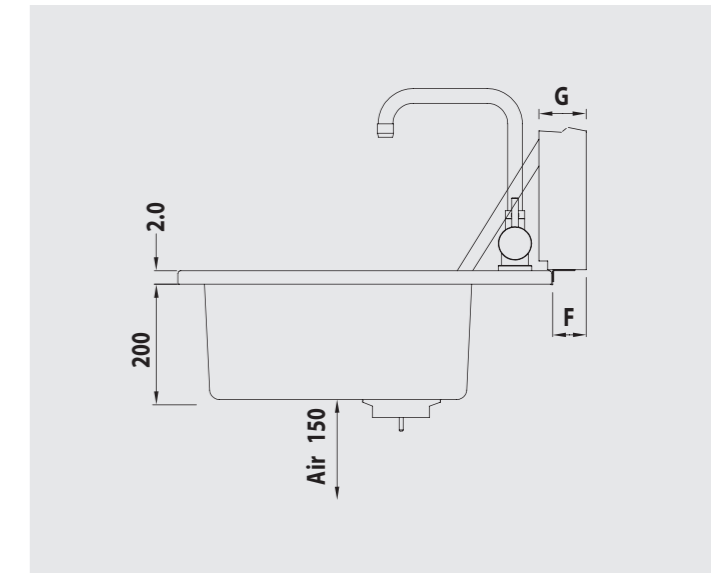
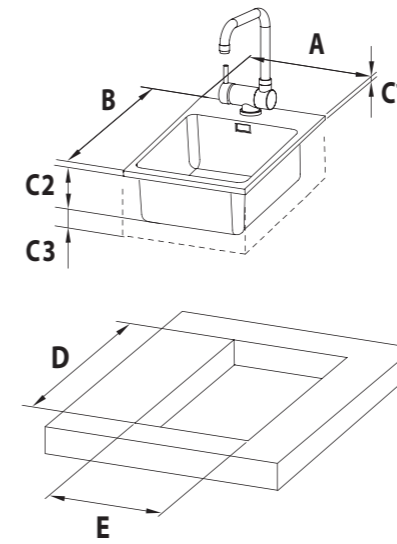
INSTALLATION | INSTALLATION | MONTAGE

DISEGNO TECNICO 5



Art.	mm		Ingombro incasso Built-in dimensions	Altezza piano incasso Built-in profile height	Altezza vano tecnico Technical clearance	Altezza vano ventilazione Airflow clearance	Altezza vano ventilazione Airflow clearance	Foro installazione Installation cut-out		Altezza coperchio Lid height	
	A	B						C1	C2	C3	C2+C3
IN.INDU	400	560	20	52	150	202	530	370	80	90	

DISEGNO TECNICO 6



Art.	mm		Ingombro incasso Built-in dimensions	Altezza piano incasso Built-in profile height	Altezza vano tecnico Technical clearance	Altezza vano ventilazione Airflow clearance	Altezza vano ventilazione Airflow clearance	Foro installazione Installation cut-out		Altezza coperchio Lid height	
	A	B						C1	C2	C3	C2+C3
IN.LAV4056	400	560	20	200	150	350	530	370	80	90	

ALIMENTAZIONE / POWER SUPPLY					S.S./INOX		kW	V
IN.55 - 55COMBI	GAS	AA 1,5V	PEO/I	P.G.S.	A 304L	6-8	--	--
IN.80 - 80MIX - 80COMBI	GAS	AA 1,5V	PEO/I	P.G.S.	A 304L	10-12	--	--
IN.80 GRILL	GAS	AA 1,5V	PEO/I	P.G.S.	A 304L	10-12	--	--
IN.EL 55	--	--	EL	IPX4	A 304L	6-12	2,08	220/230
IN.EL 80	--	--	EL	IPX4	A 304L	6-12	3,12	220/230
IN.INDU	--	--	EL	IP22	A 304L	--	3,7	220/230

GENERAL TERMS AND CONDITIONS OF SUPPLY

These General Terms and Conditions of Supply (hereinafter the GTC) shall apply to all sales made by LEVIGMATIC S.R.L. (hereinafter LEVIGMATIC) to the Customer (the natural or legal person who has agreed to purchase Products from LEVIGMATIC), pursuant to offers or order confirmations.

These GTC shall prevail over any general or specific purchasing or sales conditions of the Customer.

Price

The price on the basis of which LEVIGMATIC and the Customer have respectively agreed to sell and purchase the Products.

Delivery Date

The date on which LEVIGMATIC undertakes to deliver the Products to the Customer.

PRODUCT CHARACTERISTICS

Any information or data regarding the characteristics and/or technical specifications of the Products contained in brochures, price lists, catalogues, similar documents, websites or advertising material shall be binding only insofar as such data are expressly referred to in the offer or order confirmation.

LEVIGMATIC reserves the right to make any modifications to its Products deemed useful for their qualitative improvement, whether dimensional or structural. Photos, drawings and texts in catalogues have no contractual value.

ORDERS

Purchase orders must be made in writing and sent by post, fax or any other communication system that ensures proof and date of receipt. All orders, even if concluded through LEVIGMATIC's agents or representatives, shall not be considered final unless and until LEVIGMATIC has duly issued the order confirmation or written acceptance.

DELIVERY TERMS

In any case, agreed delivery terms are indicative and not binding. Unless otherwise agreed between the parties, the indicative delivery term is the one specified in the order confirmation or in the offer. Should LEVIGMATIC foresee that it will not be able to deliver the Products, it shall notify the Customer in writing.

DELIVERY, SHIPMENT – CLAIMS

Unless otherwise agreed, the supply of the Products shall be Ex-Works – San Vendemiano (TV) – Italy (Incoterms® 2020), even where shipment, or part thereof, is arranged by LEVIGMATIC. In any event, regardless of the agreed delivery terms, risks shall pass to the Customer no later than upon delivery to the first carrier. LEVIGMATIC shall not, in any case, be liable for loss of or damage to the Products occurring after the transfer of risk.

Upon delivery, the Customer is expressly required to inspect the Products. Any claims relating to the condition of the packaging, quantity, number or external characteristics of the Products must be notified to LEVIGMATIC in writing by registered letter with return receipt or certified e-mail, under penalty of forfeiture, within 8 (eight) days from the date of receipt of the Products.

It is understood that any claims or disputes shall not entitle the Customer to suspend or delay payment for the contested Products, nor, even less so, for other supplies.

Pallets, special packaging and/or any packaging different from standard packaging, if requested by the Customer, shall be invoiced at cost. Returns of Products may be made only after written authorisation by LEVIGMATIC and shall be regulated in accordance with the terms and conditions indicated therein.

RETURNS FOR INCORRECT ORDERS OR CAUSES NOT ATTRIBUTABLE TO PLANET OUTDOOR COOKING BY LEVIGMATIC S.r.l.

Returns due to incorrect orders or for reasons not attributable to LEVIGMATIC are not accepted. LEVIGMATIC reserves the right to assess, from time to time, whether to accept the return of Products, subject in any case to a charge of at least 30% of the returned value.

Offers, order confirmations and technical drawings accepted by the Customer concerning custom-made and/or non-standard Products may not be modified or cancelled. In the event of cancellation, LEVIGMATIC may automatically charge the Customer 100% of the value of the ordered Products. In any case, returns will not be accepted after one (1) month from receipt of the Products. Transport costs for returning Products shall always be borne by the Customer.

PRICES

Unless otherwise agreed, prices are for packaged Products EX-Works – San Vendemiano (TV) – Italy, it being understood that any other cost or charge shall be borne by the Customer. In any case, the agreed price shall be the one indicated in the offer or order confirmation.

PAYMENT TERMS

Payment shall be made at the registered office of LEVIGMATIC, via Dell'Industria 71 – 31020 – San Vendemiano (TV) – Italy, within the terms and in the manner agreed and indicated in the offer or order confirmation, with the express application of Art. 1462 of the Italian Civil Code. Unless otherwise agreed, any banking fees or commissions related to payment shall be borne by the Customer.

In the event of late payment with respect to the agreed date, the Customer shall be required to pay LEVIGMATIC interest in accordance with Legislative Decree No. 231 of 9 October 2002 and subsequent amendments, starting from the date on which payment should have been made. Irregular and/or partial non-payments entitle LEVIGMATIC to suspend and/or cancel current orders, as well as to modify the terms and conditions of subsequent orders.

WARRANTY FOR DEFECTS

LEVIGMATIC undertakes to remedy any defect, lack of quality or non-conformity of the Products attributable to it and which renders them unfit for use or significantly reduces their value, provided that such defects occur within 12 (twelve) months from actual delivery of the Products, and that such defects and any related claims are reported within 8 (eight) days of receipt in the case of apparent defects, or within 8 (eight) days from discovery in the case of hidden defects.

LEVIGMATIC may choose whether to repair or replace the defective Products, including replacement with equivalent Products. Products repaired or replaced under warranty shall be covered by the same warranty for a period of 6 (six) months from the date of repair or replacement.

Transport costs for sending defective Products under warranty from the Customer to LEVIGMATIC and for returning repaired and/or replaced Products to the Customer shall in any case be borne by the Customer.

LEVIGMATIC's liability extends only to defects that occur under normal conditions of use as provided for in the Product user manual or in accordance with proper use under established practice or applicable regulations.

The warranty shall not apply in the event of deterioration or corrosion of the Product resulting from use in particularly aggressive environments or from the use of unsuitable cleaning products.

It is understood that the above warranty (consisting of the obligation to repair or replace the Products) is exclusive and in substitution of any statutory warranties or liabilities, and excludes any other liability of LEVIGMATIC (whether contractual or tortious) arising from the supplied Products (e.g. damages, loss of profit, product recalls, etc.).

Pursuant to Art. 1462 of the Italian Civil Code, the Customer shall not be entitled to suspend or delay payments for the contested Products, nor for any other supplies.

RETENTION OF TITLE

It is agreed that the delivered Products shall remain the property of LEVIGMATIC until full payment has been received. In the event that payment by instalments is agreed, ownership of the supply shall remain with LEVIGMATIC until full payment in accordance with Art. 1523 of the Italian Civil Code.

Contract costs, registration and transcription with the Clerk's Office of the competent Court pursuant to Art. 1524 of the Italian Civil Code and Art. 84 of the implementing provisions shall be borne by the Customer.

LEVIGMATIC shall have the right to choose whether to demand immediate performance or to enforce this clause. In the latter case, it is agreed that the sums paid up to that time shall remain with LEVIGMATIC as compensation for rental, depreciation, reduced value of returned goods, and reimbursement of extrajudicial and judicial costs incurred to obtain restitution, without prejudice to compensation for further damages.

PROCESSING AND PROTECTION OF PERSONAL DATA

Customer data are processed by LEVIGMATIC, as data controller, in order to fulfil ordinary operations arising from legal or contractual obligations, in accordance with the applicable personal data protection legislation.

A copy of the information notice pursuant to Art. 13 of EU Regulation 679/2016 (GDPR) is available on the website www.levigmatic.it.

JURISDICTION

These GTC and the orders are governed by Italian law. For any dispute arising from or connected with these GTC and/or any order, the Court of Treviso shall have exclusive jurisdiction. Notwithstanding the above, LEVIGMATIC S.r.l. shall in any case have the right to bring the dispute before the competent court at the Customer's registered office.



è un brand:



PRODUCTION UNIT 1

LEVIGMATIC Professional Cooking

Via dell'Industria, 71
31020 San Vendemiano (TV)
Tel +39 0438 778161
Fax +39 0438 778385

www.levigmatic.it

PRODUCTION UNIT 2

PLA.NET Outdoor Cooking

Via dell'Industria, 39
31020 San Vendemiano (TV)
Tel +39 0438 470552
Fax +39 0438 478705

info@planetbarbecue.it
www.planetoutdoorcooking.it

L'azienda è da sempre impegnata al rispetto delle normative e certificazioni vigenti, all'utilizzo di materiali certificati idonei al contatto dei cibi (MOCA) per garantire la migliore qualità dei propri prodotti e al loro utilizzo per la cottura degli alimenti in sicurezza.

The company has always been engaged to compliance with current regulations and certifications, the use of certified materials suitable for contact with foods (MOCA) to ensure the best quality of its products and their use for cooking food safely.

Certificazioni / Certifications

CE:
GAR 2016/426 EU
EN 30-1-1
EN 30-2-1
EN 498

Enti / Certification Authorities

IMQ SpA
TÜV SÜD Product Service GmbH

CB 1276180001 - CB test certificate



Levigmatic S.r.l. si riserva di apportare ai propri prodotti qualsiasi modifica ritenuta utile al miglioramento qualitativo degli stessi, sia dimensionale che strutturale. Foto, disegni e testi non hanno carattere contrattuale.

Levigmatic Srl reserves the right to make any modifications to its products that it feels may improve their appearance or quality, either dimensional or structural. Photos, drawings and texts are not contractually binding.

Tutti i diritti riservati. È vietata la riproduzione anche parziale di immagini e testi.
All rights reserved. The reproduction of image, drawings and texts, even if partial, is forbidden.

outdoor
cooking

PLA.NET
Outdoor Cooking

Via dell'Industria, 39
31020 San Vendemiano TV
ITALY

Tel +39 0438 470 552

info@planetbarbecue.it
www.planetoutdoorcooking.it

f | @ | in | ▶

