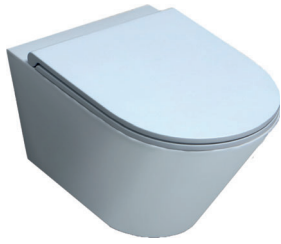


FMVKSPE0000W

sanitari sospesi Easy Clean/Easy Clean wall hung mounted sanitary wares

codice
code



Vaso Forma Easy Clean sospeso con scarico a vortice silenzioso
Forma Easy Clean vortex silent flush system

bianco lucido/ shiny white

FMVKSPE0000WBI

finiture COLORS 1250°/ COLORS 1250° finishing

(Specificare il colore al momento dell'ordine/ Specify the color when ordering)

FMVKSPE0000W... CT/CE/CA...

finiture SHINE/ SHINE finishing

(Specificare il colore al momento dell'ordine/ Specify the color when ordering)

FMVKSPE0000W... PS/SA/SS...

cm 54x37xh34

plf italy pz. 15 - plf export pcs.20

kg 24

Tecnologie/technologies:



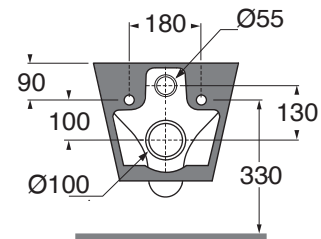
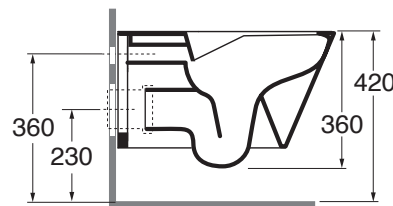
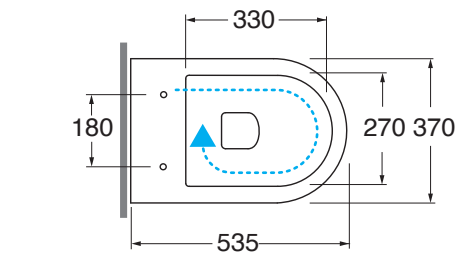
water saving



scarico a vortice



easy clean



scala/scale 1:20 dimensioni/dimensions in mm

Gamma di colori disponibile per vaso e sedile
Color range available for wc and wrapover

COLORS 1250°



Ceramica



BI
bianco lucido
shiny white

SHINE



Complementi/complements:



Sedile termoindurente
con chiusura frizionata a sgancio rapido
Thermosetting soft close seat cover
with quick release

bianco lucido/ shiny white

FOR 1800/F

COLORS 1250

FOR 1800/F...CT CA CE...

SHINE

FOR 1800/F...PS SA SS...

specificare il colore al momento dell'ordine
specify the color when ordering

Codice
code



Fissaggio rapido per staffa universale
Quick fastener for multipurpose bracket

Codice
code

IN DOTAZIONE
INCLUDED

KIT 2000 SO

TECHNICAL SHEET n°: 01	DESIGNER: OFFICINA AZZURRA	CODE: FMVKSPE0000W	Azzurra sanitari in ceramica S.p.a. via Civita Castellana snc 01030 Castel S.Elia (VT) - ITALY Tel.+39.0761 518155 Fax.+39.0761 514560		
SHEET FORMAT: A4	ISO	REVISION: 05	SCALE: 1:20	DATE: 14/03/2025	
REGULATIONS: CE EN 997 / EN33 / Dop-997*					
All the measurements respect the tolerances provided by the "AZZURRA QUALITY GUIDELINES".					

* Regulations here shown are exclusively referred to ceramic items