

AR_GENT PAVE' AR_GET

GRES PORCELLANATO . PORCELAIN STONEWARE . GRÈS CÉRAME . FEINSTEINZEUG

AR_GENT

PAVÉ AR_GENT



IL FASCINO DELL'IMPERFEZIONE, CELEBRA LA NATURALE BELLEZZA DELLA PIETRA

THE CHARM OF IMPERFECTION, CELEBRATING THE NATURAL BEAUTY OF STONE
 LE CHARME DE L'IMPERFECTION, CÉLÈBRE LA BEAUTÉ NATURELLE DE LA PIERRE
 DER CHARME DER UNVOLLKOMMENHEIT FEIERT DIE NATÜRLICHE SCHÖNHEIT DES STEINS

Ar_gent è un progetto trasversale, dai toni neutri e infinite possibilità di posa per un design contemporaneo, minimale, versatile e raffinato.

Si ispira alla bellezza del Limestone Argent, una delle pietre più raffinate della Penisola Iberica. La riproduzione della superficie lapidea permette di apprezzarne la grafica, animata da delicati effetti 3D, riflessi di luce e piccoli inserti. Il risultato è un'elegante ma informale reinterpretazione della pietra, che celebra l'incantevole fascino dell'imperfezione.

Il progetto si sviluppa in 7 formati declinati in 4 nuance – Ash, Cream, Dark, Greige – in grado di esaltare la struttura della materia evocandone la ricercatezza sin dal primo sguardo. Arricchiscono la collezione i mosaici e la duplice finitura delle superfici.

Per garantire l'impiego multiuso Sichenia sviluppa la collezione dotandola della nanotecnologia Soft Grip: morbida al tatto ma resistente allo scivolamento.

Ancora una volta, Sichenia sviluppa un ricco progetto che si distingue per varietà dei formati, spessori, eleganza di tinte e texture. Tutte caratteristiche che, insieme, ne consentono l'impiego "IN" e "OUT" sia a pavimento che a rivestimento per progetti residenziali e commerciali.

Ar_gent is a versatile project, with neutral tones and infinite laying solutions for contemporary, minimal and refined architecture.

It is inspired by the natural beauty of Limestone Argent, one of the most elegant Limestones from the Iberian Peninsula. This appealing rendition of the stone surface brings to life the graphical elements that feature soft 3D effects, light reflections and small flecks. The result is an elegant but informal reinterpretation of stone that celebrates the charm of imperfection.

The collection is available in 7 formats and 4 colours, Ash, Cream, Dark and Greige, that instantly give depth to the structure by emphasizing its natural elegance. The collection is also enriched by a range of mosaics and is available in two surface finishes.

To guarantee multipurpose use, Sichenia has enriched the collection with a state-of-the-art nanotechnology called Soft Grip: it is smooth to the touch but at the same time maintains anti-slip properties.

Once again, Sichenia has developed a comprehensive collection that stands out for its wide range of formats, of thicknesses, elegance of colors and depth of textures. All those features allow "IN" & "OUT" applications, both on floors and on walls for residential and commercial projects.

3

Ar_gent est un projet transversal, avec des tons neutres et des possibilités de pose infinies pour un design contemporain, minimal, polyvalent et raffiné.

Il s'inspire de la beauté naturelle de Limestone Argent, l'une des pierres calcaires les plus raffinées de la péninsule ibérique. La reproduction de la surface de la pierre permet d'apprécier ses graphismes, animés par de délicats effets 3D, des reflets lumineux et de petits inserts. Le résultat est une réinterprétation élégante mais informelle de la pierre, qui célèbre le charme d'imperfection.

Le projet se développe en 7 formats déclinés en 4 nuances - Ash, Cream, Dark, Greige - capable d'améliorer la structure de la matière en évoquant son raffinement dès le premier coup d'oeil. La collection s'enrichit de mosaïques et de la double finition des surfaces.

Pour garantir une utilisation polyvalente, Sichenia développe la collection avec la nanotechnologie Soft Grip: douce au toucher mais en même temps résistante au glissement.

Une fois de plus, Sichenia développe un projet riche qui se démarque par ses variétés de formats, d'épaisseurs, d'élegance des couleurs et des textures. Toutes les fonctionnalités qui permettent d'utiliser "IN" et "OUT" au sol et sur les murs pour des projets résidentiels et commerciaux.

Die Kollektion Ar_gent ist ein Querprojekt mit neutralen Tönen und unendlichen Verlegungsmöglichkeiten für ein zeitgemäßes, minimalistisches, vielseitiges und raffiniertes Design.

Bei der Entwicklung der Kollektion wurden wir inspiriert durch die natürliche Schönheit von Limestone Argent, einem der raffiniertesten Kalksteine der Iberischen Halbinsel. Die Reproduktion der Steinoberfläche ermöglicht es Ihnen, die Grafiken zu schätzen und wahrzunehmen, die durch feine 3 D-Effekte, Lichtreflexionen und kleine Einschlüsse animiert werden. Das Ergebnis ist eine elegante, aber informelle Neuinterpretation des Steins, die den bezaubernden Charme der Unvollkommenheit zelebriert.

Das Projekt entwickelt sich in 7 Formaten und 4 Nuancen, angelehnt an Ash, Cream, Dark, Greige – diese Vielfalt ist in der Lage die Struktur der Materie zu verbessern und auf den ersten Blick ihre Verfeinerung hervorzuheben. Die Kollektion wird durch Mosaik und die doppelte Oberflächenausführung bereichert.

Um den Mehrzweckgebrauch zu gewährleisten, entwickelte Sichenia die Kollektion, indem sie mit Soft Grip-Nanotechnologie ausgestattet wurde: fühlt sich glatt und angenehm an, verfügt aber gleichzeitig über Anti Slip-Eigenschaften.

Erneut entwickelt Sichenia ein reichhaltiges Projekt, das sich durch Formate, Stärken, Eleganz der Farben und Texturen auszeichnet. Alle Funktionen, die in diesem Projekt zusammenkommen, ermöglichen den Einsatz des Materials IN und OUT, sowohl auf dem Boden, als auch an Wänden für Wohn- und Geschäftsbereiche.



4

5



INDOOR - Pavimento . Floor:
Cream 60x60 . 24"x24" Matt Rettificato
Rivestimento . Wall tile:
Cream 60x120 . 24"x48" Matt Rettificato
Collection Me_tal Black 20x20 . 8"x8" Rettificato
OUTDOOR - Pavimento . Floor:
Greige 60x90 . 24"x36" Grip Rettificato
20mm R11 A+B+C



INDOOR - Pavimento . Floor: Cream 60x60 . 24"x24" Matt Rettificato
Rivestimento . Wall tile: Cream 60x120 . 24"x48" Matt Rettificato
OUTDOOR - Pavimento . Floor: Greige 60x90 . 24"x36" Grip Rettificato 20mm R11 A+B+C





Rivestimento . Wall tile: Dark 60x120 . 24"x48" Matt Rettificato
 Pavimento . Floor: Greige 90x90 . 36"x36" Matt Rettificato

AR_GENT

GRES PORCELLANATO
PORCELAIN STONEWARE
GRÈS CÉRAME
FEINSTEINZEUG



12



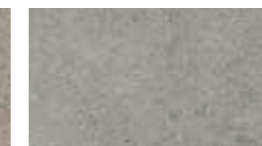
CREAM



GREIGE



ASH



DARK



FORMATI . Sizes . Formats . Formate

			Pz x	m ² x	kg x	x	m ² x	kg x
	60x120 23 ³ / ₄ x47 ¹ / ₄	Matt Rettificato	1	1,440	28,080	35	50,400	1000
		Grip Rettificato	1	1,440	28,080	35	50,400	1000
	90x90 35 ¹ / ₂ x35 ¹ / ₂	Matt Rettificato	2	1,620	31,760	25	40,500	811
	90x90 35 ¹ / ₂ x35 ¹ / ₂	20 mm Grip Rettificato	1	0,810	35,320	25	20,250	900
	60x60 23 ³ / ₄ x23 ³ / ₄	Matt Rettificato	4	1,440	27,480	30	43,200	842
	30x60 12"x23 ³ / ₄ "	Matt Rettificato	6	1,080	20,510	48	51,840	1002
	7x26 2 ³ / ₄ x10 ¹ / ₄ "	Chevron DX/SX Matt	34	0,619	13,600	36	22,276	489
	7x60 2 ³ / ₄ x23 ³ / ₄ "	Battiscopa Matt Rettificato	15	0,504	13,800	48	24,192	662
	33x120 13"x47 ¹ / ₄ "	Gradino costa retta Matt Rettificato / Grip Rettificato	2	0,792	19,600	-	-	-
	33x120 13"x47 ¹ / ₄ "	Angolo gradino costa retta SX / DX Matt Rettificato / Grip Rettificato	1	0,792	19,600	-	-	-
	30x90 12"x35 ¹ / ₂ "	Gradino toro 20 mm Grip Rettificato	1	0,270	12,900	-	-	-
	30x90 12"x35 ¹ / ₂ "	Angolo gradino toro interno/esterno SX / DX Grip Rettificato 20 mm	1	0,450	21,400	-	-	-
	30x90 12"x35 ¹ / ₂ "	Gradino costa lucida 20 mm Grip Rettificato	1	0,270	12,900	-	-	-
	30x90 12"x35 ¹ / ₂ "	Angolo gradino costa lucida interno/esterno SX / DX Grip Rettificato 20 mm	1	0,450	19,750	-	-	-

13

AR_GENT

GRES PORCELLANATO . PORCELAIN STONEWARE . GRÈS CÉRAME . FEINSTEINZEUG



CREAM



184442 - 60x120 . 24"x48"
Ret - MATT

184842 - 60x120 . 24"x48"
Ret - GRIP



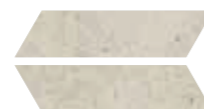
185532 - 90x90 . 36"x36"
Ret - MATT



184462 - 60x60 . 24"x24"
Ret - MATT



184702 - 30x60 . 12"x24"
Ret - MATT



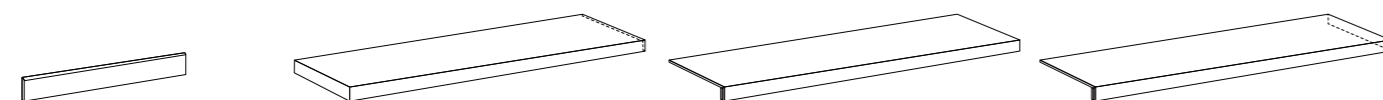
185342 - 7x26 . 2,5"x10"
Chevron Dx-Sx Ret - MATT

V2

SVILUPPO GRAFICO / PATTERNS

- 60x120 **5** Facce differenti / Different Patterns
- 90x90 **6** Facce differenti / Different Patterns
- 60x60 **10** Facce differenti / Different Patterns
- 30x60 **20** Facce differenti / Different Patterns

PEZZI SPECIALI . SPECIAL PIECES . PIÈCES SPÉCIALES . SPEZIALTEILE



Battiscopa
7x60 . 2,5"x24" Ret - MATT
185132 - Cream

Angolo Gradino Costa Retta SX
33x120 . 13"x48" Ret - MATT
185162 - Cream

Angolo Gradino Costa Retta SX
33x120 . 13"x48" Ret - GRIP
185402 - Cream

Gradino Costa Retta
33x120 . 13"x48" Ret - MATT
185142 - Cream

Gradino Costa Retta
33x120 . 13"x48" Ret - GRIP
185382 - Cream

Angolo Gradino Costa Retta DX
33x120 . 13"x48" Ret - MATT
185152 - Cream

Angolo Gradino Costa Retta DX
33x120 . 13"x48" Ret - GRIP
185392 - Cream

GREIGE



184443 - 60x120 . 24"x48"
Ret - MATT

184843 - 60x120 . 24"x48"
Ret - GRIP



185533 - 90x90 . 36"x36"
Ret - MATT



184463 - 60x60 . 24"x24"
Ret - MATT



184703 - 30x60 . 12"x24"
Ret - MATT



185343 - 7x26 . 2,5"x10"
Chevron Dx-Sx Ret - MATT

PEZZI SPECIALI . SPECIAL PIECES . PIÈCES SPÉCIALES . SPEZIALTEILE



Battiscopa
7x60 . 2,5"x24" Ret - MATT
185133 - Greige

Angolo Gradino Costa Retta SX
33x120 . 13"x48" Ret - MATT
185163 - Greige

Angolo Gradino Costa Retta SX
33x120 . 13"x48" Ret - GRIP
185403 - Greige

Gradino Costa Retta
33x120 . 13"x48" Ret - MATT
185143 - Greige

Gradino Costa Retta
33x120 . 13"x48" Ret - GRIP
185383 - Greige

Angolo Gradino Costa Retta DX
33x120 . 13"x48" Ret - MATT
185153 - Greige

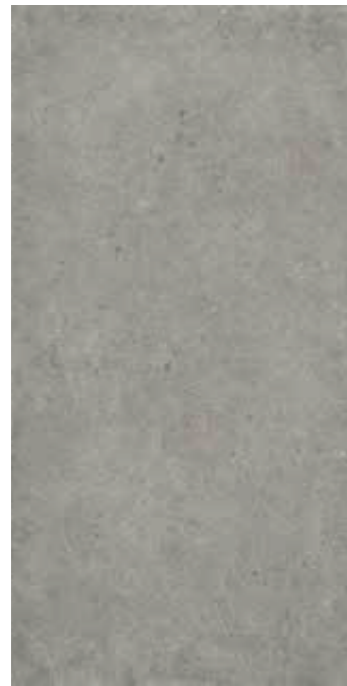
Angolo Gradino Costa Retta DX
33x120 . 13"x48" Ret - GRIP
185393 - Greige

AR_GENT

GRES PORCELLANATO . PORCELAIN STONEWARE . GRÈS CÉRAME . FEINSTEINZEUG



ASH



184441 - 60x120 . 24"x48"
Ret - MATT

184841 - 60x120 . 24"x48"
Ret - GRIP



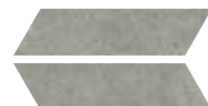
185531 - 90x90 . 36"x36"
Ret - MATT



184461 - 60x60 . 24"x24"
Ret - MATT



184701 - 30x60 . 12"x24"
Ret - Mat



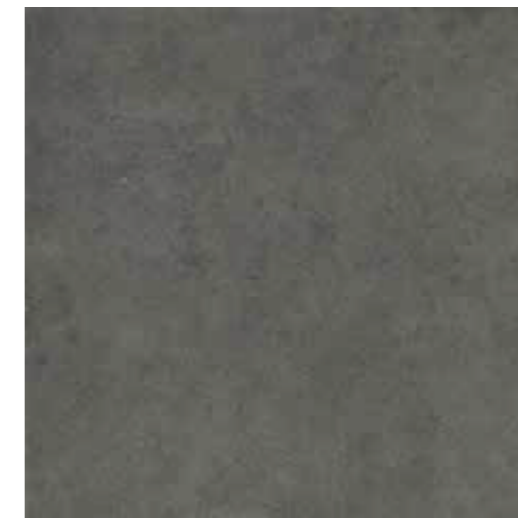
185341 - 7x26 . 2,5"x10"
Chevron Dx-Sx Ret - MATT

DARK



184444 - 60x120 . 24"x48"
Ret - MATT

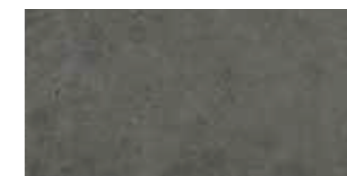
184844 - 60x120 . 24"x48"
Ret - GRIP



185534 - 90x90 . 36"x36"
Ret - MATT



184464 - 60x60 . 24"x24"
Ret - MATT



184704 - 30x60 . 12"x24"
Ret - MATT



185344 - 7x26 . 2,5"x10"
Chevron Dx-Sx Ret - MATT

16

17

V2

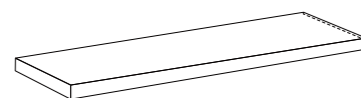
SVILUPPO GRAFICO / PATTERNS

60x120 **5** Facce differenti / Different Patterns
90x90 **6** Facce differenti / Different Patterns
60x60 **10** Facce differenti / Different Patterns
30x60 **20** Facce differenti / Different Patterns

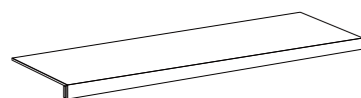
PEZZI SPECIALI . SPECIAL PIECES . PIÈCES SPÉCIALES . SPEZIALTEILE



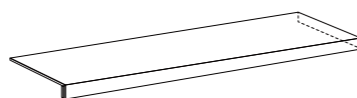
Battiscopa
7x60 . 2,5"x24" Ret - MATT
185131 - Ash



Angolo Gradino Costa Retta SX
33x120 . 13"x48" Ret - MATT
185161 - Ash



Gradino Costa Retta
33x120 . 13"x48" Ret - MATT
185141 - Ash



Angolo Gradino Costa Retta DX
33x120 . 13"x48" Ret - MATT
185151 - Ash

Angolo Gradino Costa Retta SX
33x120 . 13"x48" Ret - GRIP
185401 - Ash

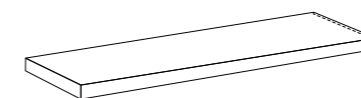
Gradino Costa Retta
33x120 . 13"x48" Ret - GRIP
185381 - Ash

Angolo Gradino Costa Retta DX
33x120 . 13"x48" Ret - GRIP
185391 - Ash

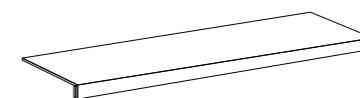
PEZZI SPECIALI . SPECIAL PIECES . PIÈCES SPÉCIALES . SPEZIALTEILE



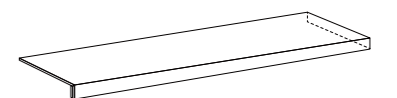
Battiscopa
7x60 . 2,5"x24" Ret - MATT
185134 - Dark



Angolo Gradino Costa Retta SX
33x120 . 13"x48" Ret - MATT
185164 - Dark



Gradino Costa Retta
33x120 . 13"x48" Ret - MATT
185144 - Dark



Angolo Gradino Costa Retta DX
33x120 . 13"x48" Ret - MATT
185154 - Dark

Angolo Gradino Costa Retta SX
33x120 . 13"x48" Ret - GRIP
185404 - Dark

Gradino Costa Retta
33x120 . 13"x48" Ret - GRIP
185384 - Dark

Angolo Gradino Costa Retta DX
33x120 . 13"x48" Ret - GRIP
185394 - Dark

AR_GENT 20MM

GRES PORCELLANATO . PORCELAIN STONEWARE . GRÈS CÉRAME . FEINSTEINZEUG



GREIGE



186033 - 90x90 . 36"x36"
Ret - GRIP

ASH



186031 - 90x90 . 36"x36"
Ret - GRIP

CREAM

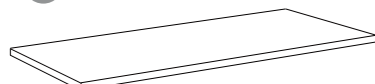


197122 - 90x90 . 36"x36"
Ret - GRIP

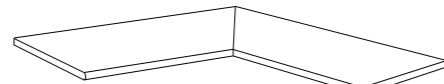
18

PEZZI SPECIALI . SPECIAL PIECES . PIÈCES SPÉCIALES . SPEZIALTEILE

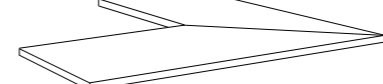
Infotech p. 245



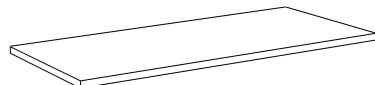
Gradino Toro
30x90 . 12"x36" Ret - GRIP
185073 - Greige
185071 - Ash
185072 - Cream



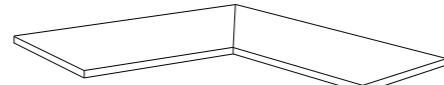
Angolo Grad. Toro Interno Dx-Sx
30x90 . 12"x36" Ret - GRIP
185083 - Greige
185081 - Ash
185082 - Cream



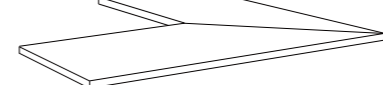
Angolo Grad. Toro Esterno Dx-Sx
30x90 . 12"x36" Ret - GRIP
185093 - Greige
185091 - Ash
185092 - Cream



Gradino Costa Lucida
30x90 . 12"x36" Ret - GRIP
185103 - Greige
185101 - Ash
185102 - Cream



Angolo Grad. Costa Lucida Int. Dx-Sx
30x90 . 12"x36" Ret - GRIP
185113 - Greige
185111 - Ash
185112 - Cream



Angolo Grad. Costa Lucida Est. Dx-Sx
30x90 . 12"x36" Ret - GRIP
185123 - Greige
185121 - Ash
185122 - Cream



19

Pavimento . Floor: Ag_ent Greige 60x60 . 24"x24" Ret - Matt / 90x90 . 36"x36" Ret - Matt 20mm / Collection Pavé Ar_gent 22,5x45 . 9"x18" GRIP
Rivestimento . Wall tile: Collection Pavé Wall House Cenere 16,5x41 . 6"x16"

PAVÉ AR_GENT

GRES PORCELLANATO . PORCELAIN STONEWARE . GRÈS CÉRAME . FEINSTEINZEUG



CREAM



184862 - 22,5x45 . 9"x18"
GRIP

GREIGE



184863 - 22,5x45 . 9"x18"
GRIP

FORMATI . Sizes . Formats . Formate

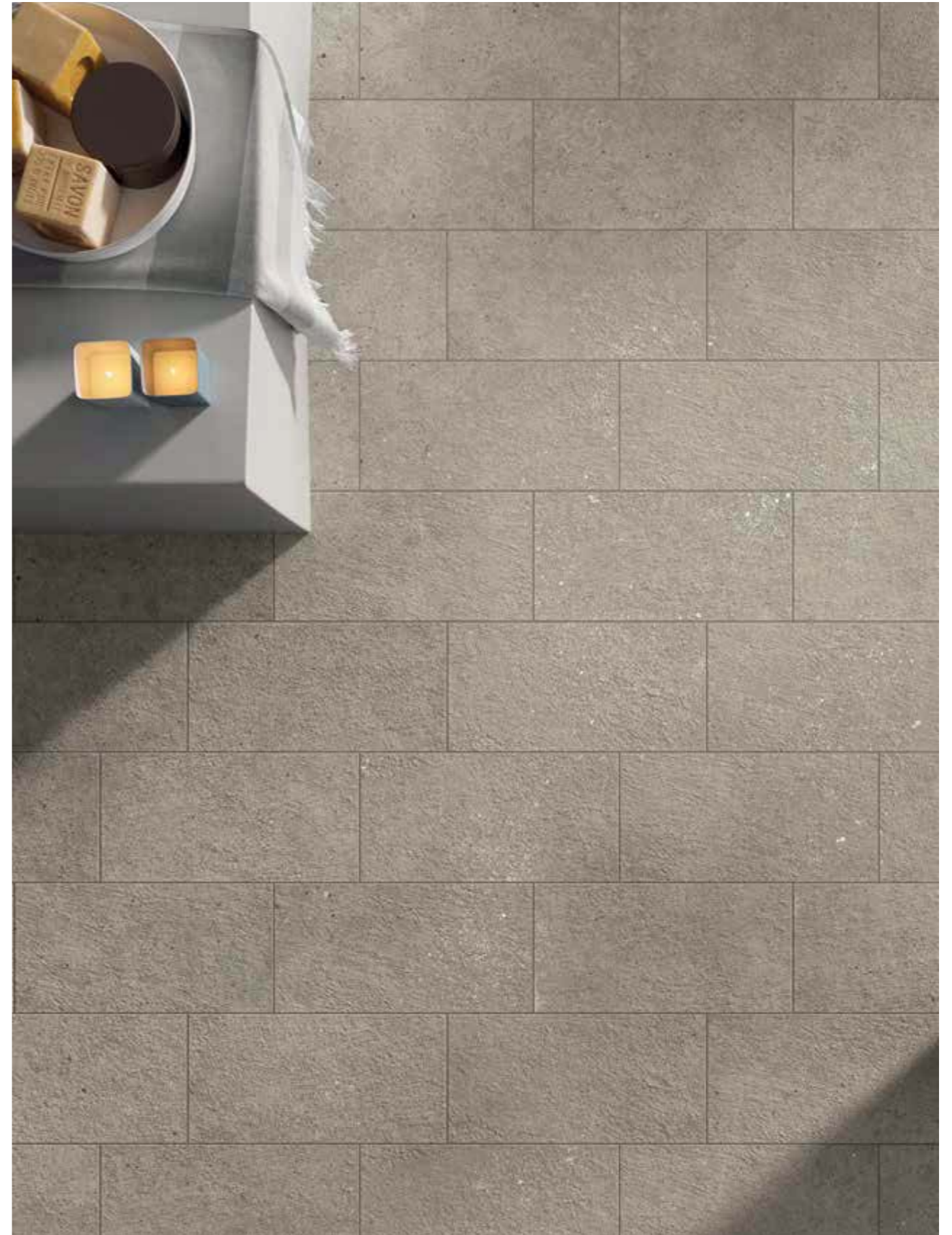
	Pz x	m² x	kg x	x	m² x	kg x	
22,5x45 8 ³ / ₄ x17 ³ / ₄ PAVÉ	● Grip	13	1,315	27,400	39	51,308	1068
15x30 6"x12"	● Elemento a L. Grip	8	0,360	9,000	-	-	-

V2 **SVILUPPO GRAFICO / PATTERNS**
22,5x45 **25** Facce differenti / Different Patterns

PEZZI SPECIALI . SPECIAL PIECES . PIÈCES SPÉCIALES . SPEZIALTEILE



Elemento a "L" Pavé
15x30 . 6"x12" GRIP **9 mm**
184972 - Cream
184973 - Greige



Pavimento . Floor: Greige 22,5x45 . 9"x18" GRIP

GRES PORCELLANATO COLORATO IN MASSA - COLOURED BODY PORCELAIN TILES

Conforme alla norma EN 14411 1 Appendice G gruppo Bla Conforme alla norma ISO 13006 Appendice G gruppo Bla
Compliant with standards EN 14411 annex G group Bla Compliant with standards ISO 13006 annex G group Bla

Spessore 10mm . 14mm . 20mm . Thickness 10mm . 14mm . 20mm

CATTERISTICHE TECNICHE Technical features	Norma Standard	Valore prescritto dalle norme Values required by the standard	Valore Sichenia Sichenia values	
			Matt	Grip
Lunghezza e larghezza Length and width	UNI EN ISO 10545/2	Rettificato . Rectified ± 0,3 % (max ± 1 mm)	Conforme Compliant	Conforme Compliant
Spessore Thickness	UNI EN ISO 10545/2	Rettificato . Rectified ± 5 % (max ± 0,5 mm)	Conforme Compliant	Conforme Compliant
Rettilinearità spigoli Warpages of edges	UNI EN ISO 10545/2	Rettificato . Rectified ± 0,3 % (max ± 0,8 mm)	Conforme Compliant	Conforme Compliant
Ortogonalità Wedging	UNI EN ISO 10545/2	Rettificato . Rectified ± 0,3 % (max ± 1,5 mm)	Conforme Compliant	Conforme Compliant
Planarità Flatness	UNI EN ISO 10545/2	Rettificato . Rectified ± 0,4 % (max ± 1,8 mm)	Conforme Compliant	Conforme Compliant
Assorbimento d'acqua Water absorption	UNI EN ISO 10545/3	≤ 0,5 %	≤ 0,1 %	≤ 0,1 %
Resistenza alla flessione Bending strength	UNI EN ISO 10545/4	≥ 35 N/mm ²	≥ 45 N/mm ²	≥ 45 N/mm ²
Sforzo di rottura Breaking strength	UNI EN ISO 10545/4	≥ 1300 N	spess. 10mm: ≥ 2'500 N spess. 14mm: ≥ 6'000N	spess. 10mm: ≥ 2'500 N spess. 20mm: ≥ 13'600 N
Dilatazione termica lineare tra 20° e 100° C Linear thermal expansion between 20° and 100° C	UNI EN ISO 10545/8		< 9 (MK-1)	< 9 (MK-1)
Resistenza agli sbalzi termici Thermal shock resistance	UNI EN ISO 10545/9	Test superato in accordo con ISO 10545-1 Pass according to EN ISO 10545-1	Nessuna alterazione No alteration	Nessuna alterazione No alteration
Resistenza al gelo Frost resistance	UNI EN ISO 10545/12	Test superato in accordo con ISO 10545-1 Pass according to EN ISO 10545-1	Nessuna alterazione No alteration	Nessuna alterazione No alteration
Resistenza alle macchie Resistance to staining	UNI EN ISO 10545/14	Classe dichiarata Declared Class	5 resistente . resistant	5 resistente . resistant
Resistenza ai prodotti chimici di uso domestico e agli additivi per piscina . Resistance to household chemicals and swimming pool salts		Classe minima B Minimum Class B	A	A
Resistenza a basse concentrazioni di acidi e alcali Resistance to low concentrations of acids and alkalis	UNI EN ISO 10545/13	Classe dichiarata Declared Class	LA	LA
Resistenza ad alte concentrazioni di acidi e alcali Resistance to high concentrations of acids and alkalis		Classe dichiarata Declared Class	HA	HA
Metodo della rampa "calzato" Shod Ramp Test	DIN 51130	Valore dichiarato Declared value	R10	R11
Metodo della rampa a piedi nudi Barefoot Ramp Test	DIN 51097	Valore dichiarato Declared value	A+B	A+B+C
Metodo del Pendolo Pendulum Friction Test	AS/NZS 4586	Declared Classification of the new pedestrian surface materials according to the Pendulum Test	P3	P4
Metodo del Pendolo Pendulum Friction Test	BS 7976	PTV ≥ 36 classifies the surface as "low slip risk"	≥ 36 Wet	≥ 36 Wet
Metodo del Pendolo Pendulum Friction Test	UNE-ENV 12633	Valore dichiarato Declared value	Classe C2	Classe C3
Coefficiente di attrito Coefficient of friction (COF)	B.C.R.A Rep. CEC/81	D. M. 236/89 del 14/06/89 μ >0,40 per elemento scivolante cuoio su pavimentazione asciutta μ >0,40 per elemento scivolante gomma dura su pavimentazione bagnata	> 0,40 Asciutto > 0,40 Bagnato	> 0,40 Asciutto > 0,40 Bagnato
Coefficiente di attrito dinamico Dynamic coefficient of friction (DCOF)	ANSI A137.1. 2012	ANSI A.137.1-2017 Requires a minimum value of 0.42 for level interior space expected to be walked upon when wet.	≥ 0,42 Wet	≥ 0,60 Wet
Stonalizzazione Shading			V2	V2
Fuga minima consigliata (*) Recommended minimum joint	indoor		2mm	-
	outdoor 10mm		-	3mm circ / approx.
	outdoor 20mm		-	5mm circ / approx

22

23

DESTINAZIONI D'USO CONSIGLIATE

Examples of applications suggested . Domaines d'utilisation conseillés . Empfohlene Anwendungsbereiche



DESTINAZIONI D'USO CONSIGLIATE 20MM

Examples of applications suggested 20mm . Domaines d'utilisation conseillés 20mm . Empfohlene Anwendungsbereiche 20mm



La riproduzione, la pubblicazione, e la distribuzione, totale o parziale, di tutto il materiale originale contenuto in questo documento sono espressamente vietate in assenza di autorizzazione da parte di Sichenia.
Sichenia si riserva di modificare i prodotti senza preavviso, declinando ogni responsabilità relativa a danni diretti o indiretti derivanti da tali modifiche.
I colori e le caratteristiche estetiche dei materiali illustrati nel presente catalogo sono da ritenersi puramente indicativi.
Per le informazioni e i dati relativi ai codici, imballaggi e pesi occorre sempre consultare l'ultimo listino aggiornato e in vigore.

The reproduction, publication, and distribution, total or partial, of all the original material contained herein is expressly prohibited without the prior consent of Sichenia.
Sichenia reserves the right to make changes to the products without notice, and shall not be liable for any direct or indirect damages arising from any changes.
The colours and the aesthetic characteristics of the products shown in this catalogue are purely illustrative.
For information and data concerning codes, packaging and weight always refer to the last updated price list in force.

La reproduction, la publication et la distribution, totales ou partielles, de tout le matériel original contenu dans ce document sont expressément interdites sans l'autorisation de Sichenia.
Sichenia se réserve la faculté de modifier les produits sans préavis, en déclinant toute responsabilité relative à des dommages directs ou indirects dérivant d'éventuelles modifications.
Les couleurs et les caractéristiques esthétiques du matériel illustré dans ce catalogue sont fournis à titre purement indicatif.
Pour les informations et les données relatives aux codes, aux emballages et aux poids, il est toujours nécessaire de consulter le dernier tarif mis à jour et en vigueur.

Die vollständige oder auszugsweise Vervielfältigung, Veröffentlichung und Verbreitung des gesamten, in diesem Dokument enthaltenen Originalmaterials, ist ohne Genehmigung der Firma Sichenia ausdrücklich untersagt.
Sichenia behält sich das Recht vor, die Produkte ohne vorherige Ankündigung zu ändern und haftet nicht für direkte oder indirekte, durch eventuelle Änderungen verursachte Schäden.
Die Farben und ästhetischen Merkmale des im vorliegenden Katalogs abgebildeten Materials sind rein zur Information und nicht bindend.
Für Informationen zu den Daten der Codenummern, Verpackungen und Gewichten siehe immer die neuste, jeweils gültige Preisliste.

* Salvo diversa indicazione dei Codici di Posa Nazionali. La larghezza delle fughe deve comunque essere decisa dalla Direzione Lavori.
* The width of grout joints must be established by the installation supervisor, unless grout widths are regulated by national laying standards.



Sichenia Gruppo Ceramiche S.p.A.

Via Toscana, 12 - 41049 Sassuolo (Modena) - Italy
Tel. +39 0536.81.84.11 - Fax Italia +39 0536.81.01.05 / export +39 0536.80.08.15

info@sichenia.it - www.sichenia.it

